



connecting
markets

Technical Connection Alternatives

Status: May 2011



EEX Technical Connections

Contents

Contents

- Connections without customer-owned MISS-architecture
 - WebAccess Eurex[®]/Xetra[®] – Simple web-based connection for Standard-Eurex[®]-/Xetra[®]-Frontends
 - WebAccess ComXerv[®] – Simple web-based connection for ComXerv[®] -Frontend
 - EEX Global Vision – web-based connection for Trayport[®] Frontend
 - WebGATE – Trayport[®] -connection via WebGATE
- Connections with customer-owned MISS-architecture
 - iAccess – Server-based access with an internet connection
 - Combined Access – Dedicated line access with internet back-up
 - Premium Access - Double dedicated line access



EEX Technical Connections

Overview

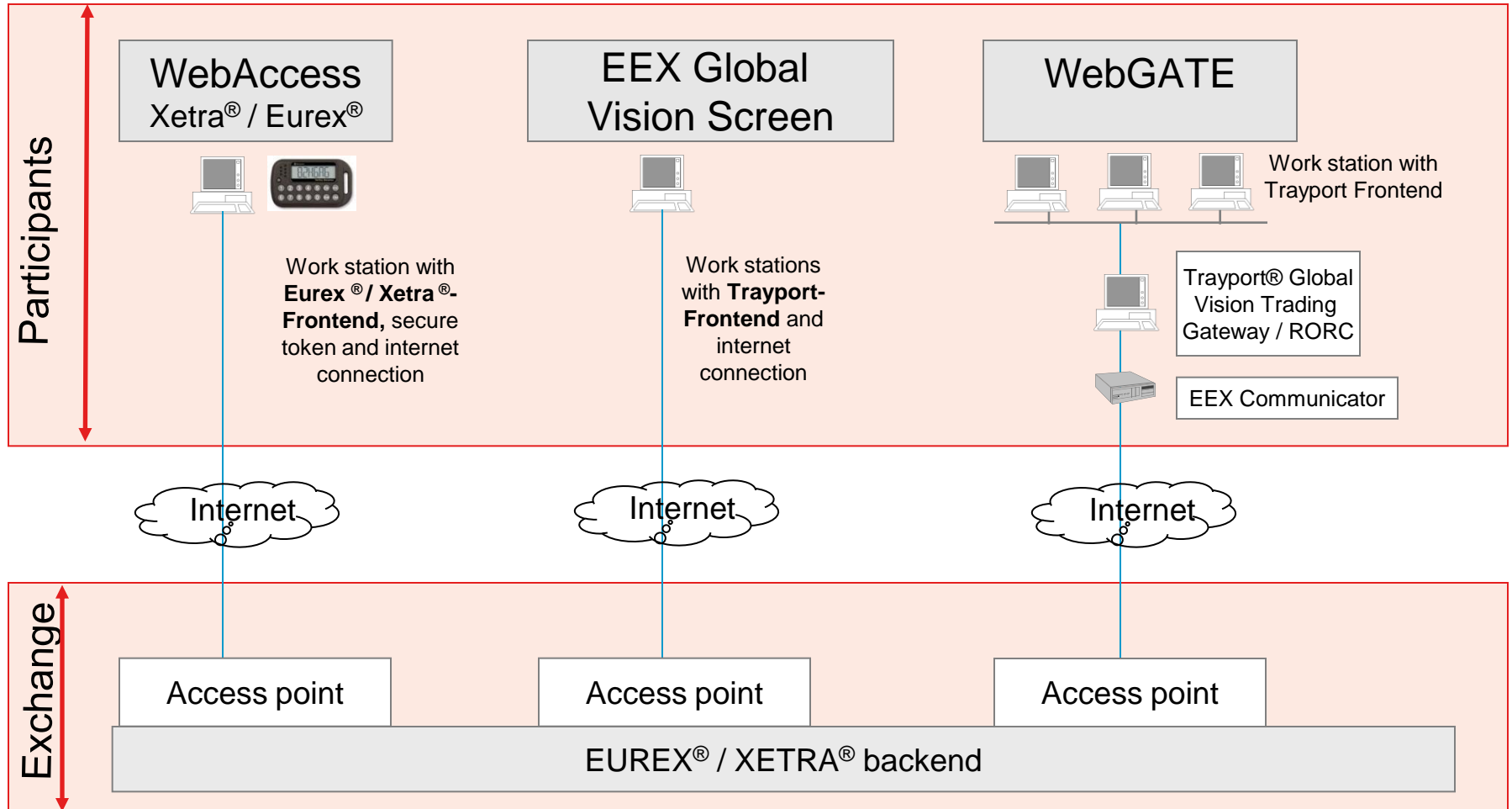
Overview

- The EEX spot market is run on the ComXerv[®] system (Gas) and the Xetra[®] system (Emissions) respectively
- The EEX derivatives market (Power, Gas, Coal, Emissions) is run on the Eurex[®] system
- It is required to have a technical access to each market
- Different connection possibilities exist, ranging from a simple web-based connection to a double leased-line connection
- All connection possibilities are described in detail on the following pages



EEX Technical Connections EUREX® / XETRA®

Connections without customer-own MISS-architecture*

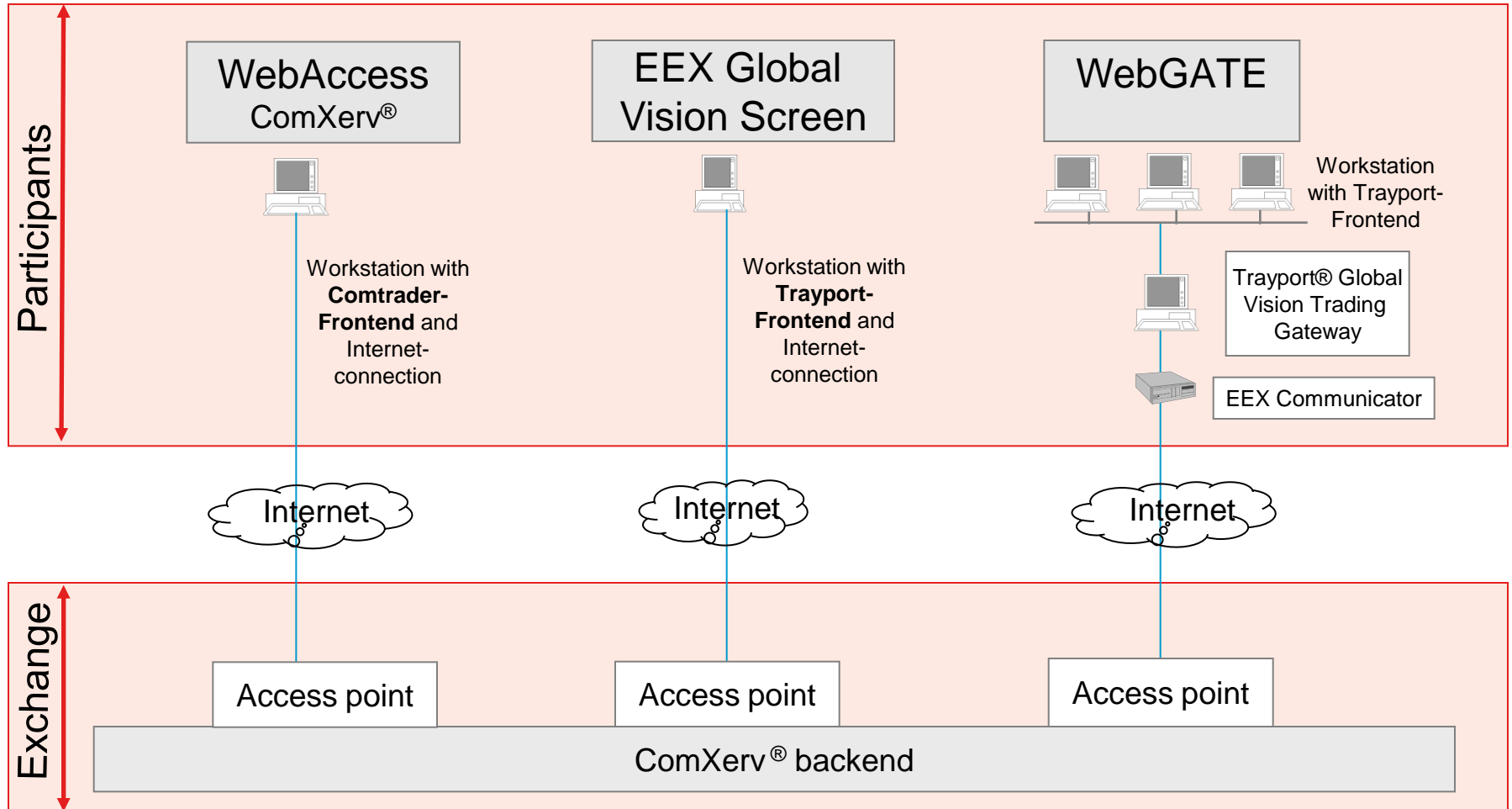


* MISS = Member Integration System Server



EEX Technical Connections ComXerv®

Connections without customer-own MISS-architecture*



* MISS = Member Integration System Server



WebAccess Eurex[®]/Xetra[®] Connection

- Standard Eurex[®]/Xetra[®] connection
- A simple web-based access connecting the computer to the EEX back-end over the internet
- Standard Eurex[®]/Xetra[®] front-end is used
- Personalized Secure Token is used to provide maximum security
- Full system functionality
- Participant chooses own Internet Service Provider (ISP)



WebAccess ComXerv[®] Connection

- Standard ComXerv[®] Connection
- A simple web-based access connecting the computer to the EEX back-end over the internet
- Comtrader-Frontend verfügbar
- User-Identification with user-ID (RACF-ID) und Passwort
- Full system functionality
- Participant chooses own Internet Service Provider (ISP)



EEX Technical Connections

EEX Global Vision Screen

EEX Global Vision Screen

- Simple web-based connection of a Trayport[®] -Frontend to EEX-Backend
- Specific technical preconditions are not required on member side – PC and Internet-access are sufficient
- Limited system functionality (OTC-trade registration and broker integration not possible, options not supported)
- Participant chooses own Internet Service Provider (ISP)
- Recommended if wishing to use Trayport[®] without comprehensive own technical equipment

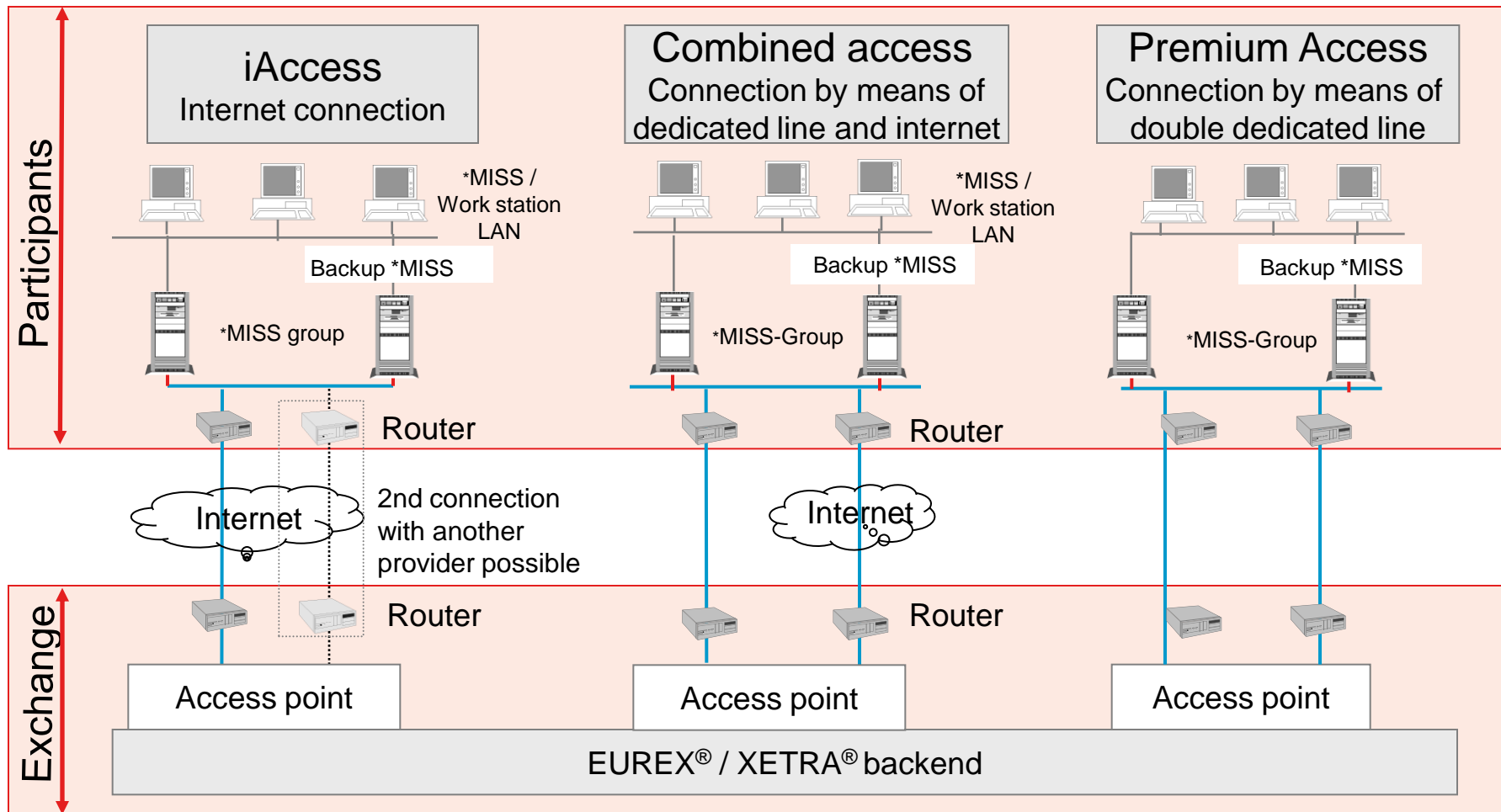


EEX Technical Connections

WebGATE Access

WebGATE Connection

- Eurex[®]-/Xetra[®]- connection in which a server is located in the trading member's company and this server is connected to the EEX back-end
- Limited system functionality (OTC-trade registration not possible, options not supported)
- Password changes via separate administration tool
- Participant chooses own Internet Service Provider (ISP)
- Recommended if using Trayport[®] without an own MISS-Infrastructure and connecting a number of traders, or if wishing to have access to a number of products (i.e. power, gas, coal and emissions)



*MISS = Member Integration System Server

iAccess Connection

- Eurex[®]-/Xetra[®] connection in which a server is located in the trading member's company and this server is connected to the EEX back-end
- Unlimited number of workstations can be linked to server
- Standard Eurex[®]-/Xetra[®] front-end is available
- Possibility of using a separate front-end to connection to the EEX back-end if compatible
- Trayport[®] GlobalVision compatibility
- Full system functionality
- No dedicated line used
- No security should line go down
- Participant chooses own Internet Service Provider (ISP)
- Recommended if connecting a number of traders, or if wishing to have access to a number of products (power, gas, coal and emissions) or if wishing to use a separate front-end (i. e. Trayport[®] GlobalVision)



EEX Technical Connections Combined Access

Combined Access Connection

- Eurex[®]/Xetra[®] connection in which a server is located in the trading member's company and this server is connected to the EEX back-end
- Unlimited number of workstations can be linked to server
- Standard Eurex[®]/Xetra[®] front-end is available
- Possibility of using a separate front-end to connection to the EEX back-end if compatible
- Trayport[®] GlobalVision compatibility
- Full system functionality
- 1 dedicated line (1024Kb Eurex/512Kb Xetra) between trading member and EEX back-end
- Internet based back-up solution
- Participant chooses own Internet Service Provider (ISP)
- Recommended for higher security and reliability, and if connecting a number of traders, or if wishing to have access to a number of products (power, gas, coal and emissions) or if wishing to use a separate front-end (i. e. Trayport[®] GlobalVision)

Premium Access Connection

- Eurex[®]/Xetra[®] connection in which a server is located in the trading member's company and this server is connected to the EEX back-end
- Unlimited number of workstations can be linked to server
- Standard Eurex[®]/Xetra[®] front-end is available
- Possibility of using a separate front-end to connection to the EEX back-end if compatible
- Trayport[®] GlobalVision compatibility
- Full system functionality
- 2 dedicated lines 128 Kb Eurex/128 Kb Xetra between trading member and EEX-backend
- Provides highest system reliability
- Participant chooses own Internet Service Provider (ISP)
- Recommended for highest security and reliability, and if connecting a number of traders, or if wishing to have access to a number of products (power, gas, coal and emissions) or if wishing to use a separate front-end (i. e. Trayport[®] GlobalVision)