



connecting  
markets



# Technical Connection Alternatives

Status: January 2011



# EEX Technical Connections

## Contents

### Contents

- Connections without customer-owned MISS-architecture
  - WebAccess – Simple web-based connection for Standard-Eurex<sup>®</sup> -/ Xetra<sup>®</sup>- Frontends
  - EEX Global Vision – web-based connection for Trayport<sup>®</sup> Frontend
  - WebGATE – Trayport<sup>®</sup> -connection via WebGATE
- Connections with customer-owned MISS-architecture
  - iAccess – Server-based access with an internet connection
  - Combined Access – Dedicated line access with internet back-up
  - Premium Access - Double dedicated line access



# EEX Technical Connections Overview

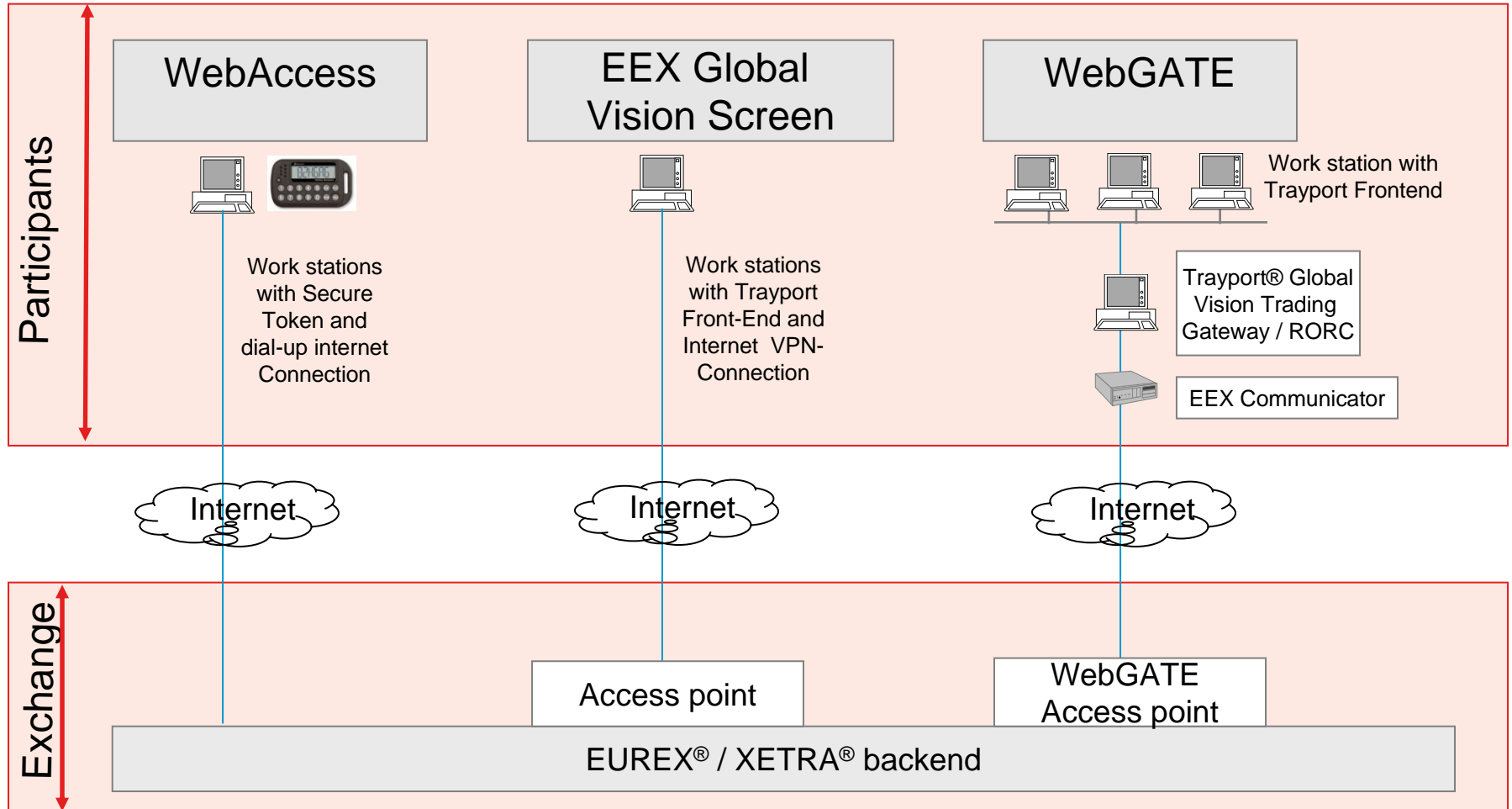
## Overview

- The EEX spot market (Gas, Emissions) is run on the Xetra<sup>®</sup> system
- The EEX derivatives market (Power, Gas, Coal, Emissions) is run on the Eurex<sup>®</sup> system
- It is required to have a technical access to each market
- A member trading both markets will require a technical access to both markets
- Six connection possibilities exist, ranging from a simple web-based connection to a double leased-line connection
- All connection possibilities are described in detail on the following pages



# EEX Technical Connections

Connections without customer-own MISS-architecture\*



\* MISS = Member Integration System Server



### WebAccess Connection

- Standard Eurex<sup>®</sup>/Xetra<sup>®</sup> connection
- A simple web-based access connecting the computer to the EEX back-end over the internet
- Standard Eurex<sup>®</sup>/Xetra<sup>®</sup> front-end is used
- Secure Token is used to provide maximum security
- Token can be used by a number of users, but not at the same time -> for access at the same time a separate token is needed
- Full system functionality
- Participant chooses own Internet Service Provider (ISP)



# EEX Technical Connections

## EEX Global Vision Screen

### EEX Global Vision Screen

- Simple web-based connection of a Trayport<sup>®</sup>-Frontend to EEX-Backend
- Specific technical preconditions are not required on member side – PC and Internet-access are sufficient
- Limited system functionality (OTC-trade registration and broker integration not possible, options not supported, trading currently limited to Power and Coal)
- Participant chooses own Internet Service Provider (ISP)
- Recommended if wishing to use Trayport<sup>®</sup> without comprehensive own technical equipment



# EEX Technical Connections

## WebGATE Access

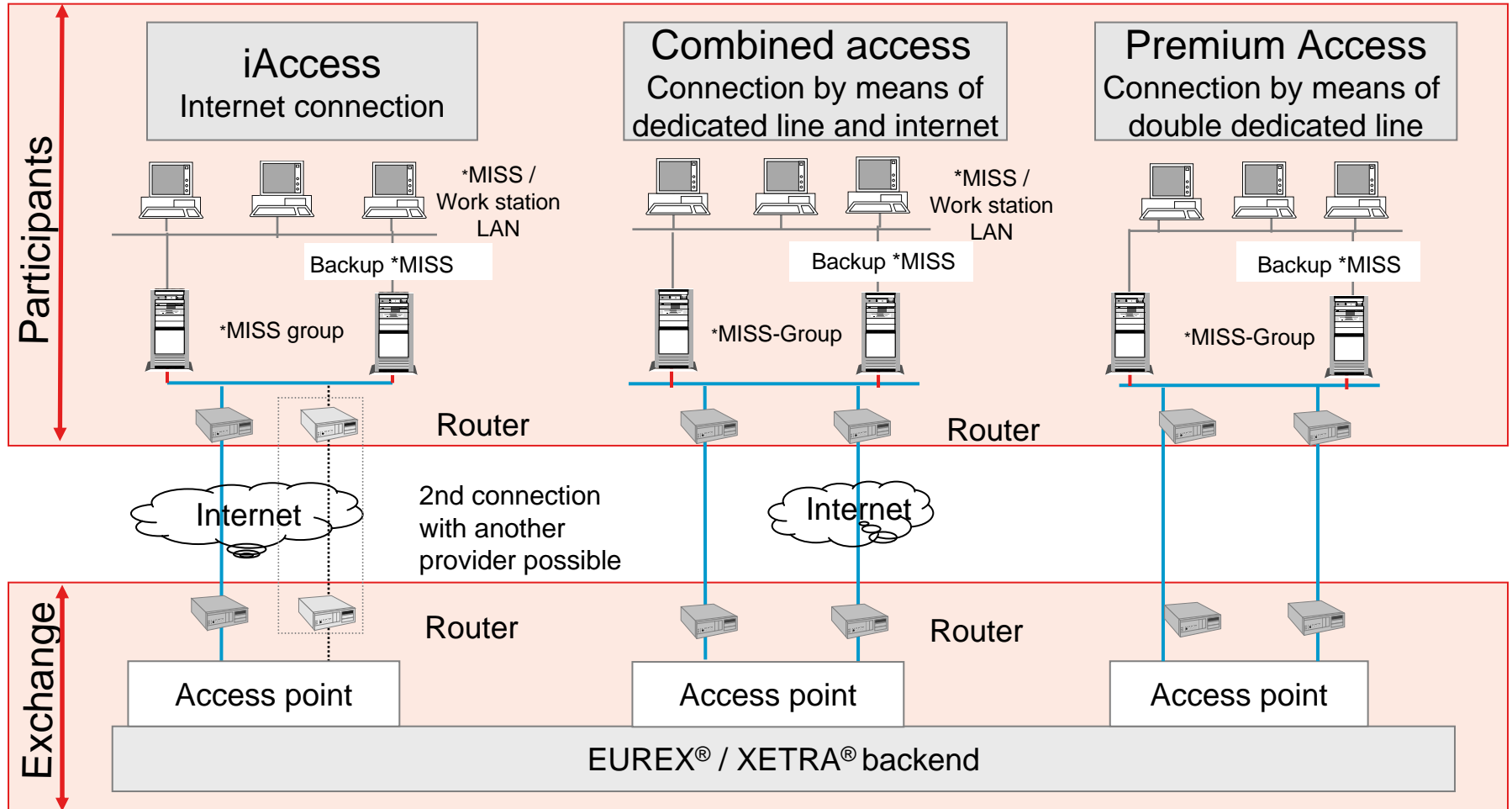
### WebGATE Connection

- Eurex<sup>®</sup>-/Xetra<sup>®</sup>- connection in which a server is located in the trading member's company and this server is connected to the EEX back-end
- Limited system functionality (OTC-trade registration not possible, options not supported)
- Password changes via separate administration tool
- Participant chooses own Internet Service Provider (ISP)
- Recommended if using Trayport<sup>®</sup> without an own MISS-Infrastructure and connecting a number of traders, or if wishing to have access to a number of products (i.e. power, gas, coal and emissions)



# EEX Technical Connections

## Connection with customer-own MISS-Architecture \*



\*MISS = Member Integration System Server



### iAccess Connection

- Eurex<sup>®</sup>-/Xetra<sup>®</sup> connection in which a server is located in the trading member's company and this server is connected to the EEX back-end
- Unlimited number of workstations can be linked to server
- Standard Eurex<sup>®</sup>-/Xetra<sup>®</sup> front-end is available
- Possibility of using a separate front-end to connection to the EEX back-end if compatible
- Trayport<sup>®</sup> GlobalVision compatibility
- Full system functionality
- No dedicated line used
- No security should line go down
- Participant chooses own Internet Service Provider (ISP)
- Recommended if connecting a number of traders, or if wishing to have access to a number of products (i.e. power, gas, coal and emissions) or if wishing to use a separate front-end (i.e. Trayport<sup>®</sup> GlobalVision)



# EEX Technical Connections

## Combined Access

### Combined Access Connection

- Eurex/Xetra connection in which a server is located in the trading member's company and this server is connected to the EEX back-end
- Unlimited number of workstations can be linked to server
- Standard Eurex/Xetra front-end is available
- Possibility of using a separate front-end to connection to the EEX back-end if compatible
- Trayport<sup>®</sup> GlobalVision compatibility
- Full system functionality
- 1 dedicated line ( 1024Kb Eurex/512Kb Xetra) between trading member and EEX back-end
- Internet based back-up solution
- Participant chooses own Internet Service Provider (ISP)
- Recommended for higher security and reliability, and if connecting a number of traders, or if wishing to have access to a number of products (i.e. power, gas, coal and emissions) or if wishing to use a separate front-end (i.e. Trayport<sup>®</sup> GlobalVision)



# EEX Technical Connections

## Premium Access

### Premium Access Connection

- Eurex<sup>®</sup>/Xetra<sup>®</sup> connection in which a server is located in the trading member's company and this server is connected to the EEX back-end
- Unlimited number of workstations can be linked to server
- Standard Eurex<sup>®</sup>/Xetra<sup>®</sup> front-end is available
- Possibility of using a separate front-end to connection to the EEX back-end if compatible
- Trayport<sup>®</sup> GlobalVision compatibility
- Full system functionality
- 2 dedicated lines 128 Kb Eurex/128 Kb Xetra between trading member and EEX-backend
- Provides highest system reliability
- Participant chooses own Internet Service Provider (ISP)
- Recommended for highest security and reliability, and if connecting a number of traders, or if wishing to have access to a number of products (i.e. power, gas, coal and emissions) or if wishing to use a separate front-end (i.e. Trayport<sup>®</sup> GlobalVision)