

CWE Market Coupling Project

Technical Workshops -

May 2008

Participants Survey -

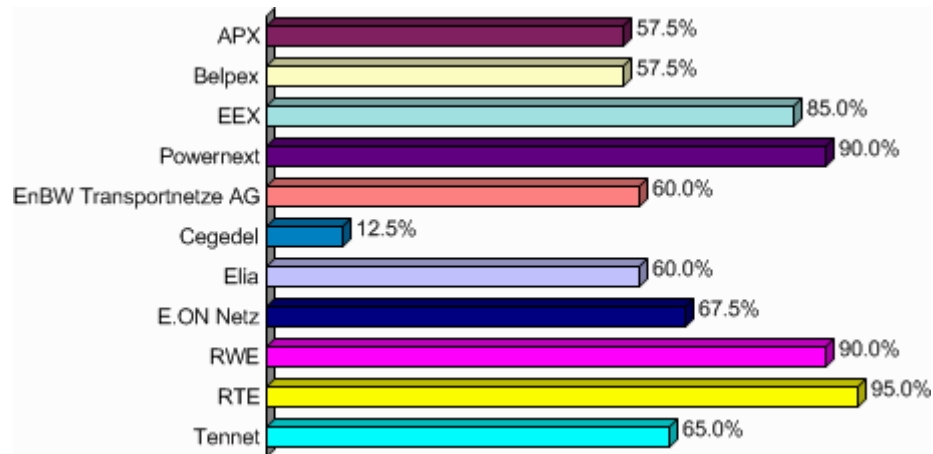
Results

1- General Feedback.....	2
2- Respondents that are either RTE customer or Powernext member	18
3- Respondents that are either Tennet customer or APX member	31
4- Respondents that are either Elia customer or Belpex member	44
5- Respondents that are either EnBW Transportnetze, E.On Netz, RWE customer or EEX member.....	59
6 – List of respondents	73

1- General Feedback

General

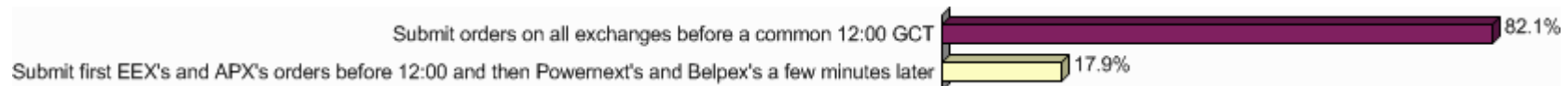
3-You are a customer of...		
	Nb	% obs.
APX	23	57.5%
Belpex	23	57.5%
EEX	34	85.0%
Powernext	36	90.0%
EnBW Transportnetze AG	24	60.0%
Cegedel	5	12.5%
Elia	24	60.0%
E.ON Netz	27	67.5%
RWE	36	90.0%
RTE	38	95.0%
Tennet	26	65.0%
Total	40	



Daily Schedule and Market Timings

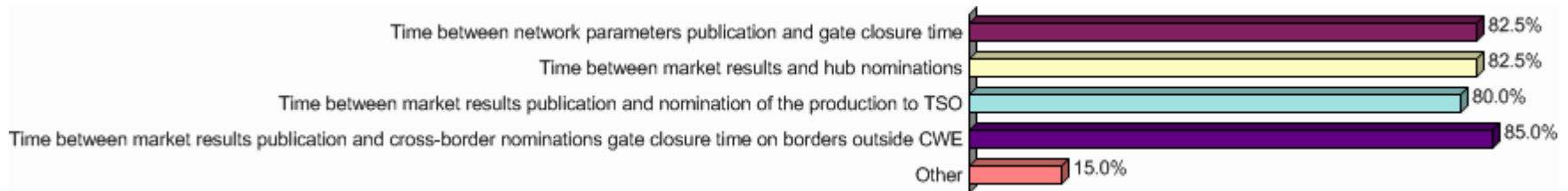
1-Since currently, Powernext and Belpex do not have interregional coupling (NordNed, EMCC), which option is preferable?

	Nb	% cit.
Submit orders on all exchanges before a common 12:00 GCT	32	82.1%
Submit first EEX's and APX's orders before 12:00 and then Powernext's and Belpex's a few minutes later	7	17.9%
Total	39	100.0%



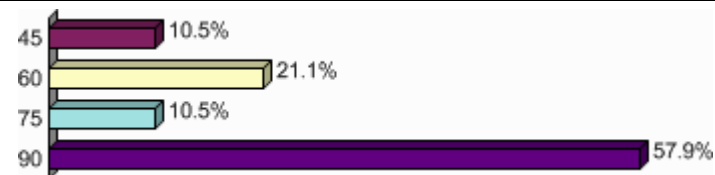
2-What time interval is the most constraining for you (1 being the most constraining)?

	Nb	% obs.	Imp.
Time between network parameters publication and gate closure time	33	82.5%	3.32
Time between market results and hub nominations	33	82.5%	3.16
Time between market results publication and nomination of the production to TSO	32	80.0%	2.78
Time between market results publication and cross-border nominations gate closure time on borders outside CWE	34	85.0%	3.43
Other	6	15.0%	0.38
Total	40		



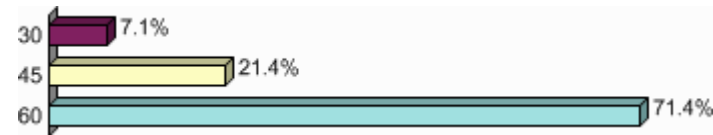
3-What is your needed time between network parameters publication and gate closure time (in minutes)?

	Nb	% cit.
45	4	10.5%
60	8	21.1%
75	4	10.5%
90	22	57.9%
Total	38	100.0%



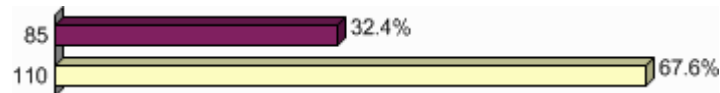
4- What is your needed time between market results publication and hub nominations in Belgium (in minutes)?

	Nb	% cit.
30	2	7.1%
45	6	21.4%
60	20	71.4%
Total	28	100.0%



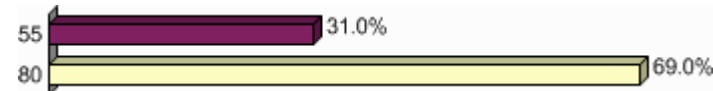
5- What is your needed time between market results publication and hub nominations in Germany (in minutes)?

	Nb	% cit.
85	12	32.4%
110	25	67.6%
Total	37	100.0%



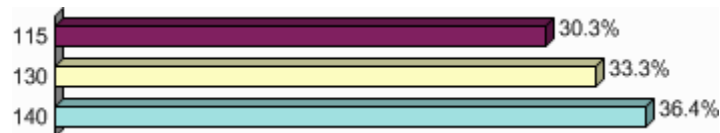
6- What is your needed time between market results publication and hub nominations in The Netherlands (in minutes)?

	Nb	% cit.
55	9	31.0%
80	20	69.0%
Total	29	100.0%

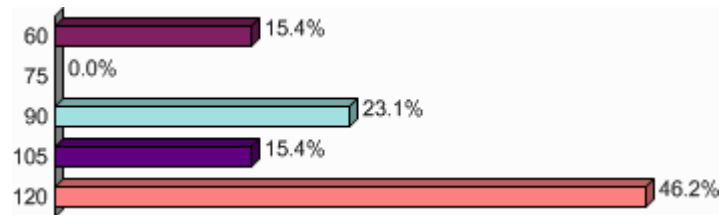


7- What is your needed time between market results publication and nomination of production to TSO given the new generation schedules deadlines in France (in minutes)?

	Nb	% cit.
115	10	30.3%
130	11	33.3%
140	12	36.4%
Total	33	100.0%



8- What is your needed time between market results publication and nomination of production to TSO given the new generation schedules deadlines in Belgium (in minutes)?		
	Nb	% cit.
60	4	15.4%
75	0	0.0%
90	6	23.1%
105	4	15.4%
120	12	46.2%
Total	26	100.0%



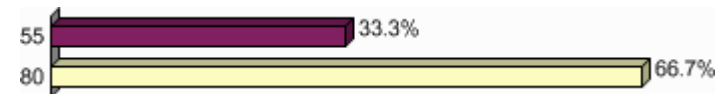
9- What is your needed time between market results publication and nomination of production to TSO given the new generation schedules deadlines Germany (in minutes)?		
	Nb	% cit.
85	12	37.5%
110	20	62.5%

Total	32	100.0%
--------------	-----------	---------------



10- What is your needed time between market results publication and nomination of production to TSO given the new generation schedules deadlines The Netherlands (in minutes)?

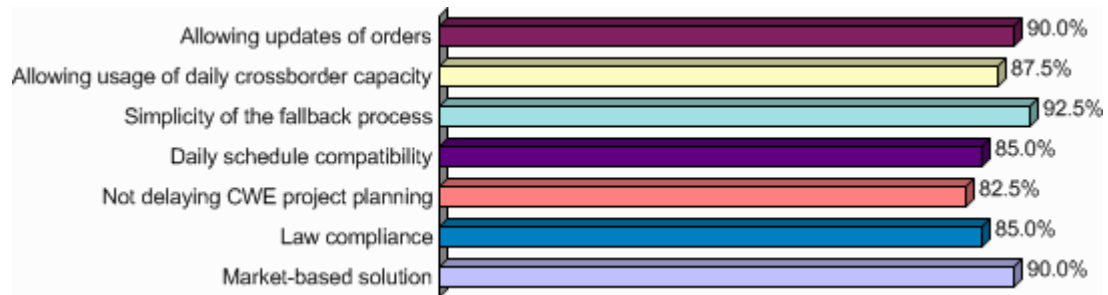
	Nb	% cit.
55	9	33.3%
80	18	66.7%
Total	27	100.0%



Fall Back Solutions

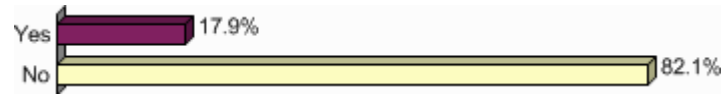
1- In case of fallback situation, how would you rank the following requirements (1 being the most important)?

	Nb	% obs.	Imp.
Allowing updates of orders	36	90.0%	4.82
Allowing usage of daily crossborder capacity	35	87.5%	4.55
Simplicity of the fallback process	37	92.5%	4.79
Daily schedule compatibility	34	85.0%	3.79
Not delaying CWE project planning	33	82.5%	1.92
Law compliance	34	85.0%	2.16
Market-based solution	36	90.0%	4.55
Total	40		



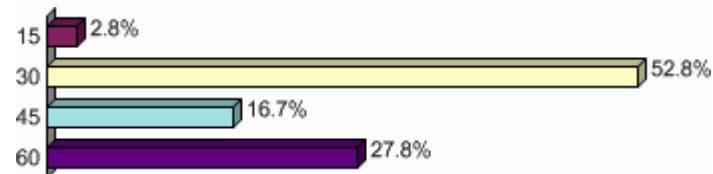
2- Is option 1 acceptable regarding the risk of being unbalanced in day-ahead?

	Nb	% cit.
Yes	7	17.9%
No	32	82.1%
Total	39	100.0%



3- As far as option 1 is concerned, what time do you need to update your orders in the order books (in minutes)?

	Nb	% cit.
15	1	2.8%
30	19	52.8%
45	6	16.7%
60	10	27.8%
Total	36	100.0%



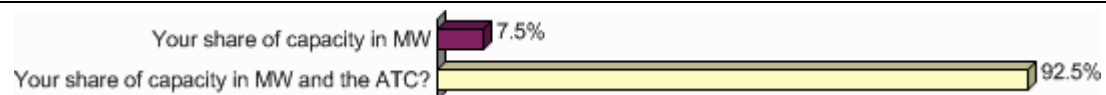
4-As far as option 2 is concerned, how often should the participants of the fallback mechanism have the possibility to register?

	Nb	% cit.
Once at all	13	34.2%
Once a year	10	26.3%
Once a month	15	39.5%
Total	38	100.0%



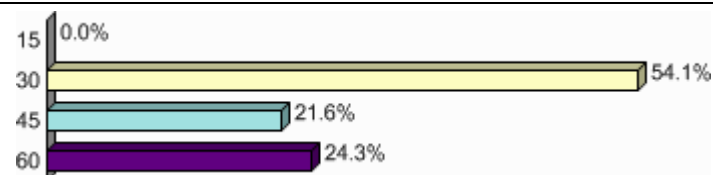
5- In case of option 2, do you need to know :

	Nb	% obs.
Your share of capacity in MW	3	7.5%
Your share of capacity in MW and the ATC?	37	92.5%
Total	40	100.0%



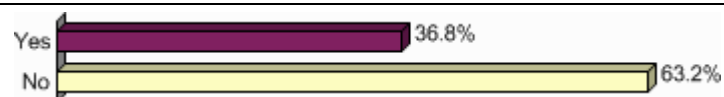
6- In case of option 2, what time do you need to update your orders in the order book once you know the capacity you have (in minutes)?

	Nb	% cit.
15	0	0.0%
30	20	54.1%
45	8	21.6%
60	9	24.3%
Total	37	100.0%



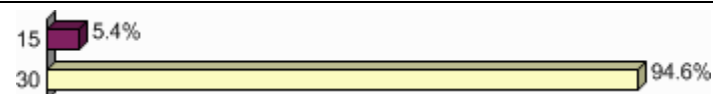
7- Knowing that fallbacks are very rare, would option 2 be acceptable even if it is not market-based?

	Nb	% cit.
Yes	14	36.8%
No	24	63.2%
Total	38	100.0%



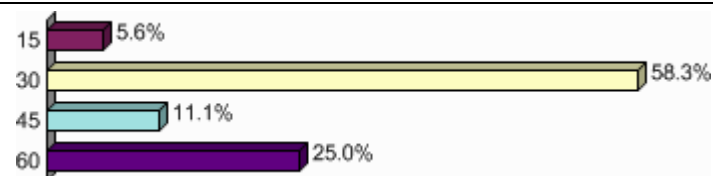
8-As far as option 3 is concerned, what is your minimum needed time between the publication of ATC auction specification and auction start (in minutes)?

	Nb	% cit.
15	2	5.4%
30	35	94.6%
Total	37	100.0%



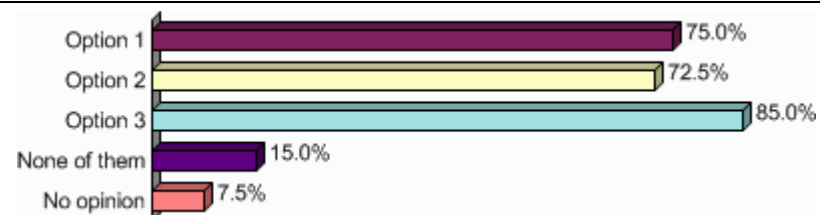
9- In case of option 3, what time do you need to update your orders in the order book once you know the capacity you have (in minutes)?

	Nb	% cit.
15	2	5.6%
30	21	58.3%
45	4	11.1%
60	9	25.0%
Total	36	100.0%



10-How would you rank those three options (1 being the most acceptable for you)?

	Nb	% obs.	Imp.
Option 1	30	75.0%	2.79
Option 2	29	72.5%	3.00
Option 3	34	85.0%	4.08
None of them	6	15.0%	0.55
No opinion	3	7.5%	0.21
Total	40		



12- In case of fallback, what is your needed time between market results publication and nomination of production to the TSO in France (in minutes)?

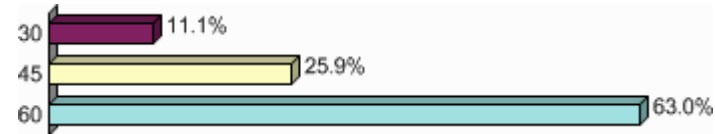
	Nb	% cit.
60	13	38.2%
75	9	26.5%
90	12	35.3%
Total	34	100.0%



13- In case of fallback, what is your needed time between market results publications and nomination of production to the TSO in Belgium (in minutes)?

	Nb	% cit.
--	----	--------

30	3	11.1%
45	7	25.9%
60	17	63.0%
Total	27	100.0%

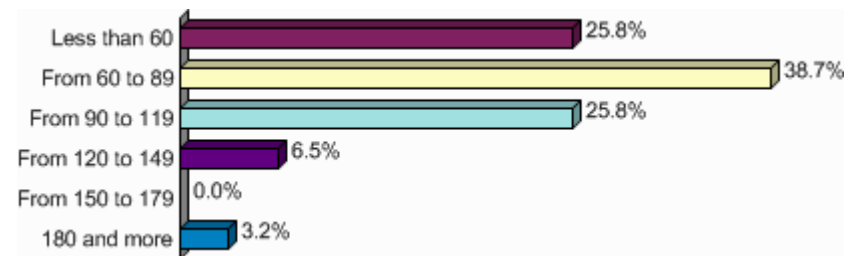


14-In case of fallback, what is your needed time between market results publication and nomination of production to the TSO in Germany (in minutes)?

Mean = **72.58**

Min = **30** Max = **180**

	Nb	% cit.
Less than 60	8	25.8%
From 60 to 89	12	38.7%
From 90 to 119	8	25.8%
From 120 to 149	2	6.5%
From 150 to 179	0	0.0%
180 and more	1	3.2%
Total	31	100.0%



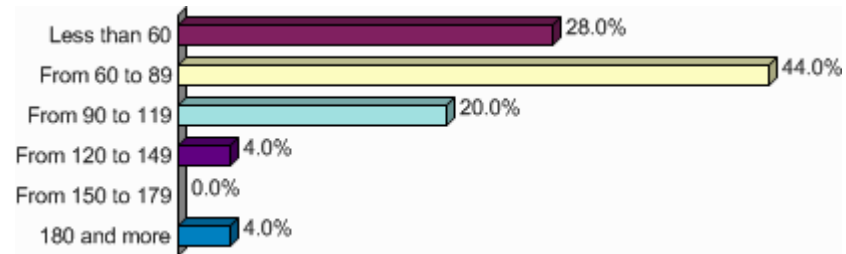
15- In case of fallback, what is your needed time between market results publication and nomination of production to the TSO in The Netherlands (in minutes)?

Mean = **68.20**

Min = **30** Max = **180**

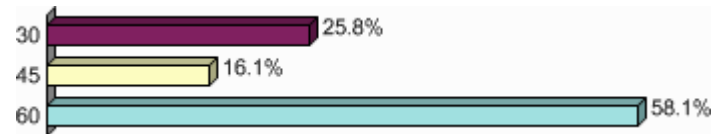
	Nb	% cit.
Less than 60	7	28.0%
From 60 to 89	11	44.0%
From 90 to 119	5	20.0%
From 120 to 149	1	4.0%
From 150 to 179	0	0.0%
180 and more	1	4.0%

Total	25	100.0%
--------------	-----------	---------------



16- In case of option 2 and 3, what is your needed time in France between crossborder nominations and nomination of production to the TSO (in minutes)?

	Nb	% cit.
30	8	25.8%
45	5	16.1%
60	18	58.1%
Total	31	100.0%



17- In case of option 2 and 3, what is your needed time in France between power exchange results publication and crossborder nominations (in minutes)?

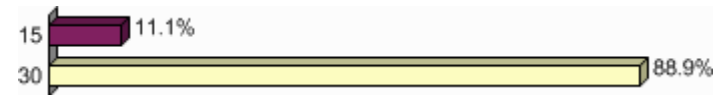
	Nb	% cit.
15	2	5.6%
30	34	94.4%
Total	36	100.0%



18- In case of option 2 and 3, what is your needed time in Belgium between power exchange results publication and crossborder nominations (in minutes)?

	Nb	% cit.
--	----	--------

15	3	11.1%
30	24	88.9%
Total	27	100.0%

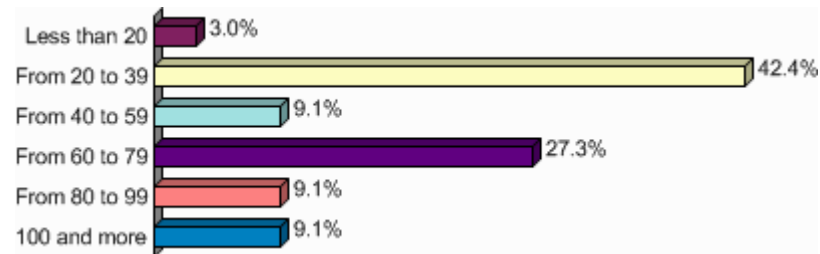


19- In case of option 2 and 3, what is your needed time in Germany between power exchange results publication and crossborder nominations (in minutes)?

Mean = **51.97**

Min = **15** Max = **120**

	Nb	% cit.
Less than 20	1	3.0%
From 20 to 39	14	42.4%
From 40 to 59	3	9.1%
From 60 to 79	9	27.3%
From 80 to 99	3	9.1%
100 and more	3	9.1%
Total	33	100.0%

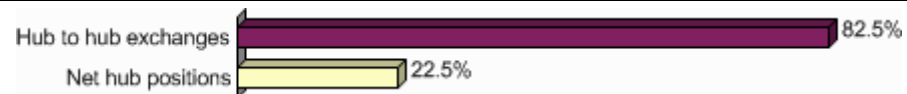


20- In case of option 2 and 3, what is your needed time in The Netherlands between power exchange results publication and crossborder nominations (in minutes)?		
	Nb	% cit.
15	3	10.0%
30	27	90.0%
Total	30	100.0%



Flow-Based Model and Data publication

1- In the simulation worksheet, what would you prefer to enter?		
	Nb	% obs.
Hub to hub exchanges	33	82.5%
Net hub positions	9	22.5%
Total	40	



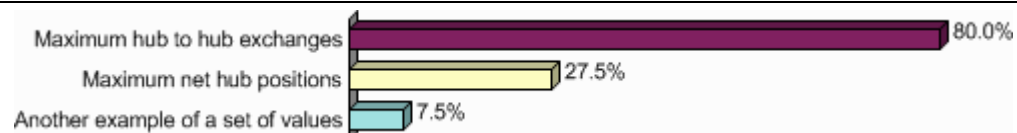
2-Do you need other data than the ones presented?

	Nb	% cit.
Yes	15	39.5%
No	23	60.5%
Total	38	100.0%



3-What would be your preferred indicator to visualize network limitations?

	Nb	% obs.
Maximum hub to hub exchanges	32	80.0%
Maximum net hub positions	11	27.5%
Another example of a set of values	3	7.5%
Total	40	



4-Do you need other network data than the ones presented?

	Nb	% cit.
Yes	17	45.9%
No	20	54.1%
Total	37	100.0%



5-Would you prefer to have network information published on a common website managed by the TSOs?

	Nb	% cit.

Yes	37	97.4%
No	1	2.6%
No opinion	0	0.0%
Total	38	100.0%

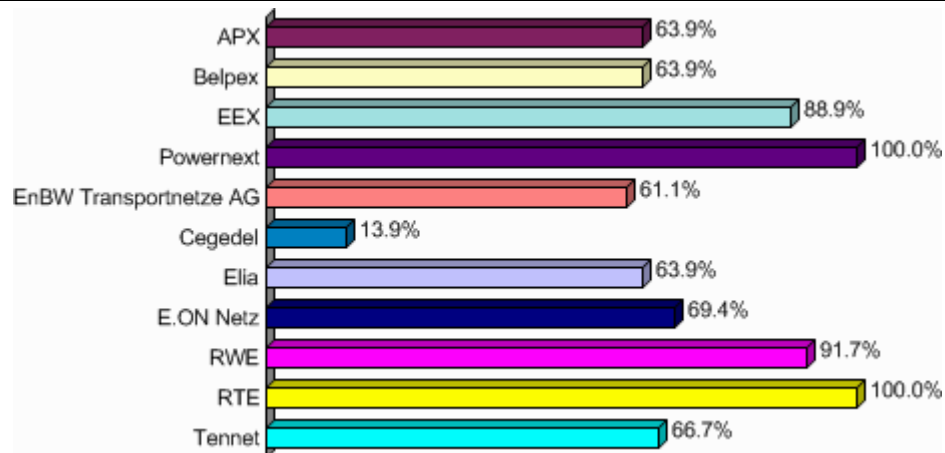


2-Respondents that are either RTE customer or Powernext member

General

3-You are a customer of...		
	Nb	% obs.
APX	23	63.9%
Belpex	23	63.9%
EEX	32	88.9%
Powernext	36	100.0%
EnBW Transportnetze AG	22	61.1%

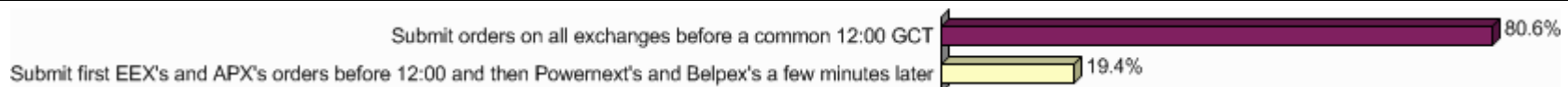
Cegedel	5	13.9%
Elia	23	63.9%
E.ON Netz	25	69.4%
RWE	33	91.7%
RTE	36	100.0%
Tennet	24	66.7%
Total	36	



Daily Schedule and Market Timings

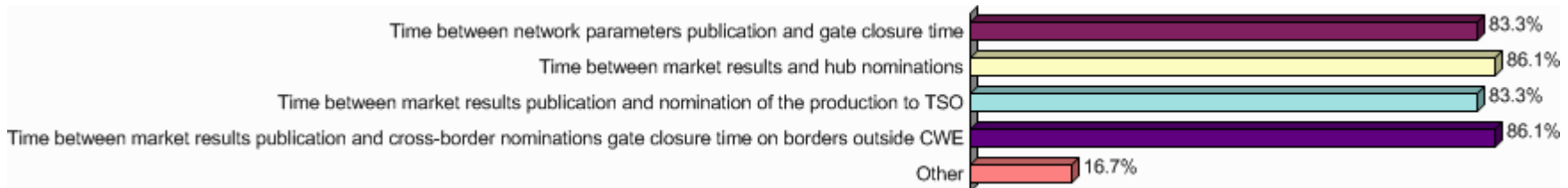
1-Since currently, Powernext and Belpex do not have interregional coupling (NordNed, EMCC), which option is preferable?

	Nb	% cit.
Submit orders on all exchanges before a common 12:00 GCT	29	80.6%
Submit first EEX's and APX's orders before 12:00 and then Powernext's and Belpex's a few minutes later	7	19.4%
Total	36	100.0%



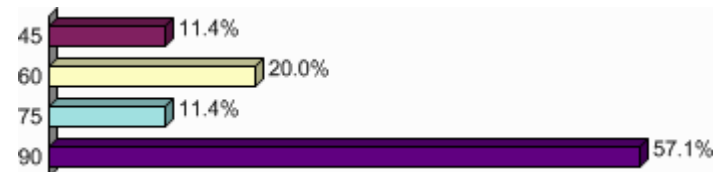
2-What time interval is the most constraining for you (1 being the most constraining)?

	Nb	% obs.	Imp.
Time between network parameters publication and gate closure time	30	83.3%	3.29
Time between market results and hub nominations	31	86.1%	3.21
Time between market results publication and nomination of the production to TSO	30	83.3%	2.85
Time between market results publication and cross-border nominations gate closure time on borders outside CWE	31	86.1%	3.38
Other	6	16.7%	0.41
Total	36		



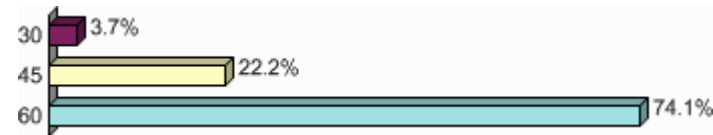
3-What is your needed time between network parameters publication and gate closure time (in minutes)?

	Nb	% cit.
45	4	11.4%
60	7	20.0%
75	4	11.4%
90	20	57.1%
Total	35	100.0%



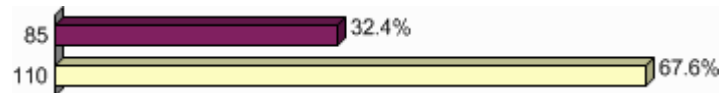
4- What is your needed time between market results publication and hub nominations in Belgium (in minutes)?

	Nb	% cit.
30	1	3.7%
45	6	22.2%
60	20	74.1%
Total	27	100.0%



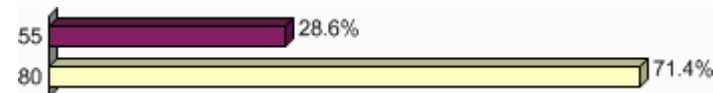
5- What is your needed time between market results publication and hub nominations in Germany (in minutes)?

	Nb	% cit.
85	11	32.4%
110	23	67.6%
Total	34	100.0%



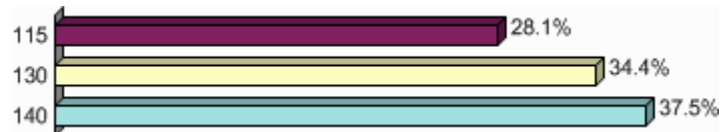
6- What is your needed time between market results publication and hub nominations in The Netherlands (in minutes)?

	Nb	% cit.
55	8	28.6%
80	20	71.4%
Total	28	100.0%



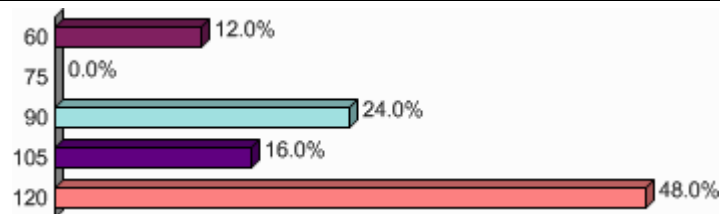
7- What is your needed time between market results publication and nomination of production to TSO given the new generation schedules deadlines in France (in minutes)?

	Nb	% cit.
115	9	28.1%
130	11	34.4%
140	12	37.5%
Total	32	100.0%



8- What is your needed time between market results publication and nomination of production to TSO given the new generation schedules deadlines in Belgium (in minutes)?

	Nb	% cit.
60	3	12.0%
75	0	0.0%
90	6	24.0%
105	4	16.0%
120	12	48.0%
Total	25	100.0%



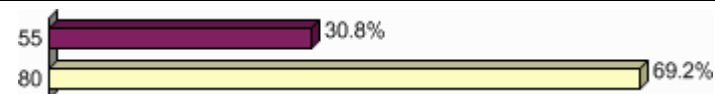
9- What is your needed time between market results publication and nomination of production to TSO given the new generation schedules deadlines Germany (in minutes)?

	Nb	% cit.
85	11	37.9%
110	18	62.1%
Total	29	100.0%



10- What is your needed time between market results publication and nomination of production to TSO given the new generation schedules deadlines The Netherlands (in minutes)?

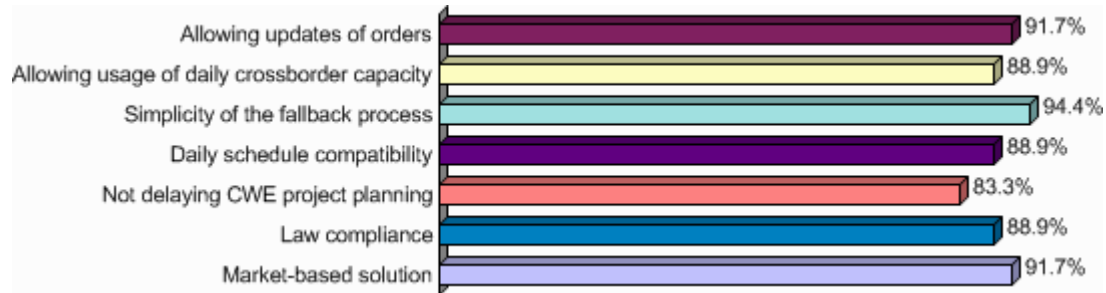
	Nb	% cit.
55	8	30.8%
80	18	69.2%
Total	26	100.0%



Fall Back Solutions

1- In case of fallback situation, how would you rank the following requirements (1 being the most important)?

	Nb	% obs.	Imp.
Allowing updates of orders	33	91.7%	4.80
Allowing usage of daily crossborder capacity	32	88.9%	4.54
Simplicity of the fallback process	34	94.4%	4.80
Daily schedule compatibility	32	88.9%	3.83
Not delaying CWE project planning	30	83.3%	1.94
Law compliance	32	88.9%	2.17
Market-based solution	33	91.7%	4.46
Total	36		



2- Is option 1 acceptable regarding the risk of being unbalanced in day-ahead?

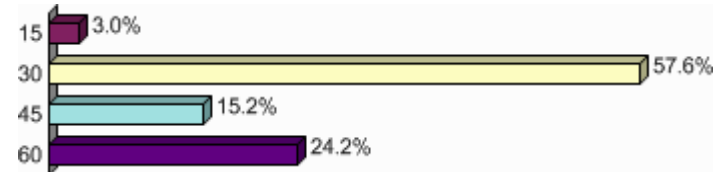
	Nb	% cit.
Yes	6	16.7%
No	30	83.3%
Total	36	100.0%



3- As far as option 1 is concerned, what time do you need to update your orders in the order books (in minutes)?

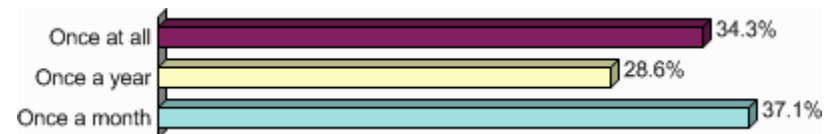
	Nb	% cit.
15	1	3.0%

30	19	57.6%
45	5	15.2%
60	8	24.2%
Total	33	100.0%



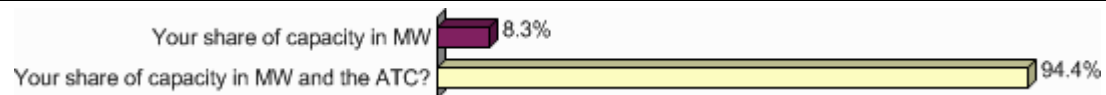
4-As far as option 2 is concerned, how often should the participants of the fallback mechanism have the possibility to register?

	Nb	% cit.
Once at all	12	34.3%
Once a year	10	28.6%
Once a month	13	37.1%
Total	35	100.0%



5- In case of option 2, do you need to know :

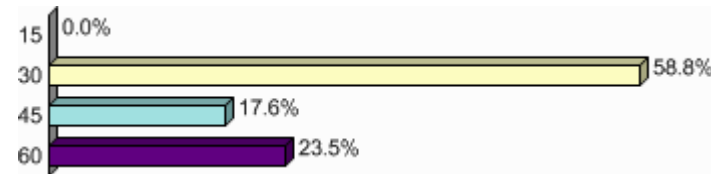
	Nb	% obs.
Your share of capacity in MW	3	8.3%
Your share of capacity in MW and the ATC?	34	94.4%
Total	36	



6- In case of option 2, what time do you need to update your orders in the order book once you know the capacity you have (in minutes)?

	Nb	% cit.
15	0	0.0%
30	20	58.8%

45	6	17.6%
60	8	23.5%
Total	34	100.0%



7- Knowing that fallbacks are very rare, would option 2 be acceptable even if it is not market-based?

	Nb	% cit.
Yes	14	40.0%
No	21	60.0%
Total	35	100.0%



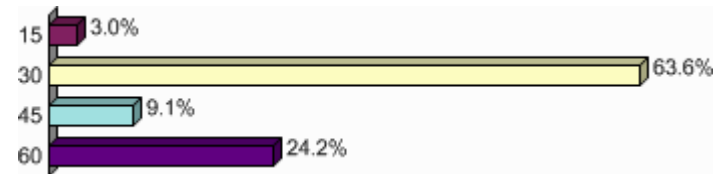
8-As far as option 3 is concerned, what is your minimum needed time between the publication of ATC auction specification and auction start (in minutes)?

	Nb	% cit.
15	1	2.9%
30	33	97.1%
Total	34	100.0%



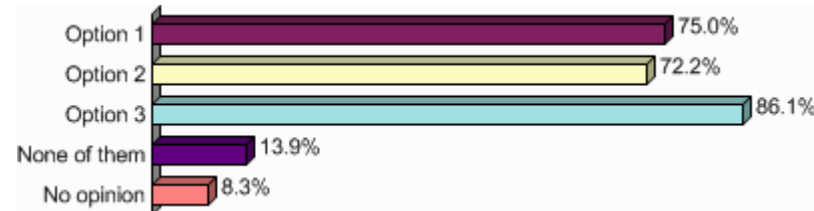
9- In case of option 3, what time do you need to update your orders in the order book once you know the capacity you have (in minutes)?

	Nb	% cit.
15	1	3.0%
30	21	63.6%
45	3	9.1%
60	8	24.2%
Total	33	100.0%



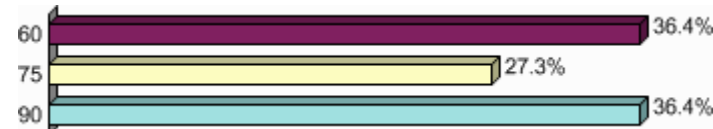
10-How would you rank those three options (1 being the most acceptable for you)?

	Nb	% obs.	Imp.
Option 1	27	75.0%	2.74
Option 2	26	72.2%	2.91
Option 3	31	86.1%	4.06
None of them	5	13.9%	0.51
No opinion	3	8.3%	0.23
Total	36		



12- In case of fallback, what is your needed time between market results publication and nomination of production to the TSO in France (in minutes)?

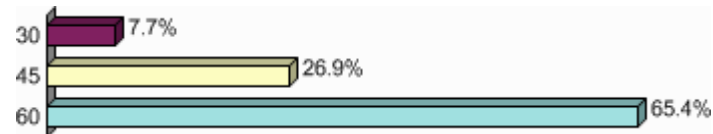
	Nb	% cit.
60	12	36.4%
75	9	27.3%
90	12	36.4%
Total	33	100.0%



13- In case of fallback, what is your needed time between market results publications and nomination of production to the TSO in Belgium (in minutes)?

	Nb	% cit.
--	----	--------

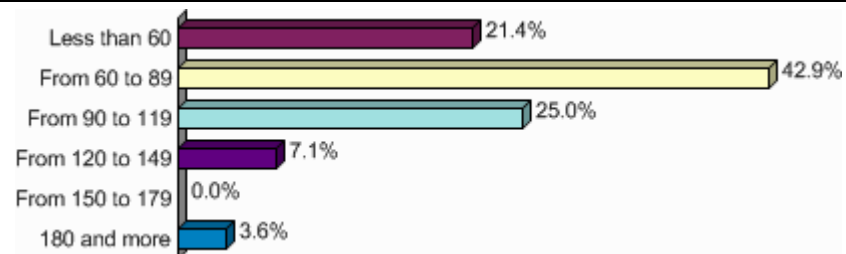
30	2	7.7%
45	7	26.9%
60	17	65.4%
Total	26	100.0%



14-In case of fallback, what is your needed time between market results publication and nomination of production to the TSO in Germany (in minutes)?

Mean = **73.75**
 Min = **30** Max = **180**

	Nb	% cit.
Less than 60	6	21.4%
From 60 to 89	12	42.9%
From 90 to 119	7	25.0%
From 120 to 149	2	7.1%
From 150 to 179	0	0.0%
180 and more	1	3.6%
Total	28	100.0%

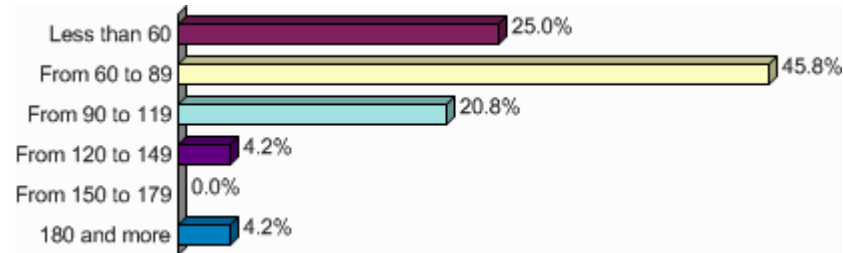


15- In case of fallback, what is your needed time between market results publication and nomination of production to the TSO in The Netherlands (in minutes)?

Mean = **69.79**
 Min = **30** Max = **180**

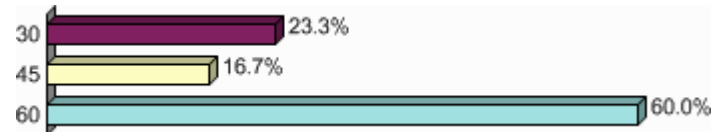
	Nb	% cit.
Less than 60	6	25.0%
From 60 to 89	11	45.8%

From 90 to 119	5	20.8%
From 120 to 149	1	4.2%
From 150 to 179	0	0.0%
180 and more	1	4.2%
Total	24	100.0%



16- In case of option 2 and 3, what is your needed time in France between crossborder nominations and nomination of production to the TSO (in minutes)?

	Nb	% cit.
30	7	23.3%
45	5	16.7%
60	18	60.0%
Total	30	100.0%



17- In case of option 2 and 3, what is your needed time in France between power exchange results publication and crossborder nominations (in minutes)?

	Nb	% cit.
15	1	2.9%
30	33	97.1%
Total	34	100.0%



18- In case of option 2 and 3, what is your needed time in Belgium between power exchange results publication and crossborder nominations (in minutes)?

	Nb	% cit.
15	2	7.7%
30	24	92.3%
Total	26	100.0%

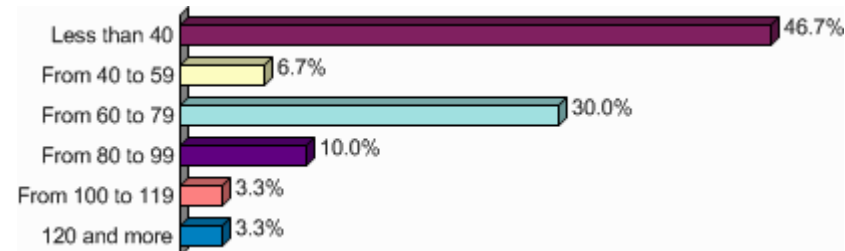


19- In case of option 2 and 3, what is your needed time in Germany between power exchange results publication and crossborder nominations (in minutes)?

Mean = **51.50**

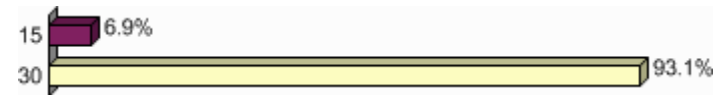
Min = **20** Max = **120**

	Nb	% cit.
Less than 40	14	46.7%
From 40 to 59	2	6.7%
From 60 to 79	9	30.0%
From 80 to 99	3	10.0%
From 100 to 119	1	3.3%
120 and more	1	3.3%
Total	30	100.0%



20- In case of option 2 and 3, what is your needed time in The Netherlands between power exchange results publication and crossborder nominations (in minutes)?

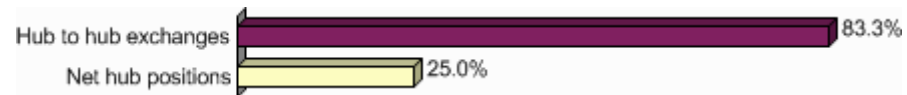
	Nb	% cit.
15	2	6.9%
30	27	93.1%
Total	29	100.0%



Flow-Based Model and Data publication

1- In the simulation worksheet, what would you prefer to enter?

	Nb	% obs.
Hub to hub exchanges	30	83.3%
Net hub positions	9	25.0%
Total	36	



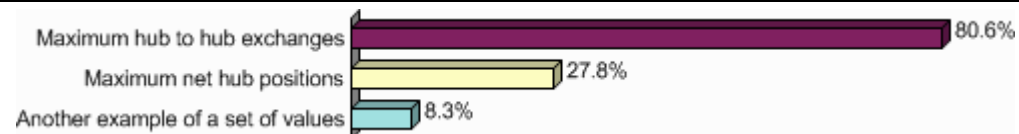
2-Do you need other data than the ones presented?

	Nb	% cit.
Yes	14	40.0%
No	21	60.0%
Total	35	100.0%



3-What would be your preferred indicator to visualize network limitations?

	Nb	% obs.
Maximum hub to hub exchanges	29	80.6%
Maximum net hub positions	10	27.8%
Another example of a set of values	3	8.3%
Total	36	



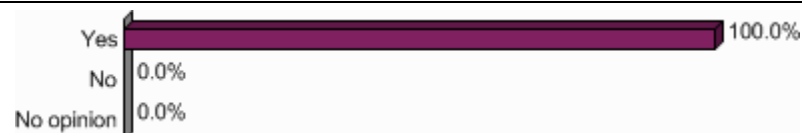
4-Do you need other network data than the ones presented?

	Nb	% cit.
Yes	16	47.1%
No	18	52.9%
Total	34	100.0%



5-Would you prefer to have network information published on a common website managed by the TSOs?

	Nb	% cit.
Yes	35	100.0%
No	0	0.0%
No opinion	0	0.0%
Total	35	100.0%



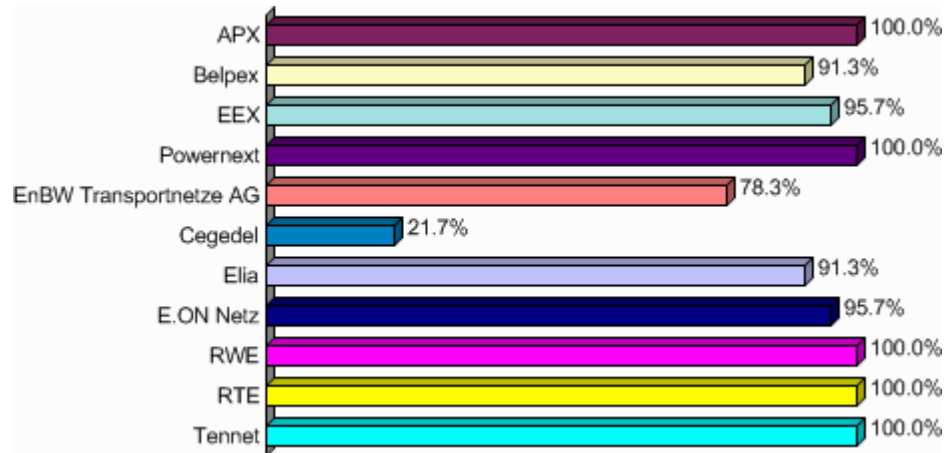
3-Respondents that are either Tennet customer or APX member

General

3-You are a customer of...

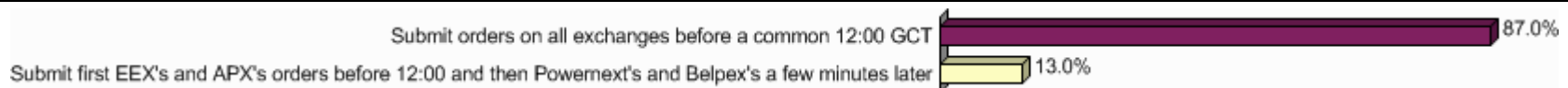
	Nb	% obs.
APX	23	100.0%
Belpex	21	91.3%
EEX	22	95.7%
Powernext	23	100.0%
EnBW Transportnetze AG	18	78.3%
Cegedel	5	21.7%

Elia	21	91.3%
E.ON Netz	22	95.7%
RWE	23	100.0%
RTE	23	100.0%
Tennet	23	100.0%
Total	23	



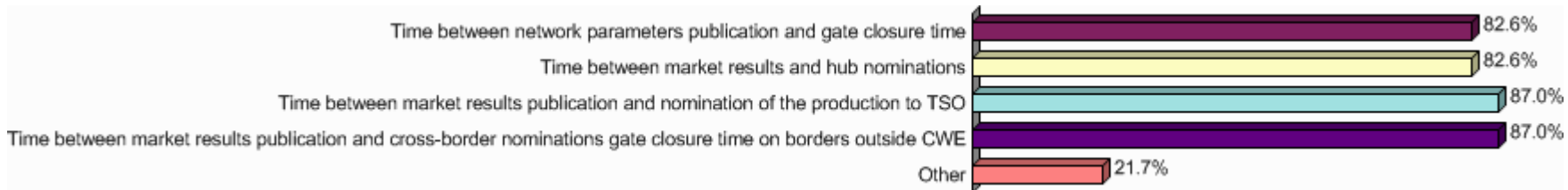
Daily Schedule and Market Timings

1-Since currently, Powernext and Belpex do not have interregional coupling (NordNed, EMCC), which option is preferable?		
	Nb	% cit.
Submit orders on all exchanges before a common 12:00 GCT	20	87.0%
Submit first EEX's and APX's orders before 12:00 and then Powernext's and Belpex's a few minutes later	3	13.0%
Total	23	100.0%



2-What time interval is the most constraining for you (1 being the most constraining)?			
	Nb	% obs.	Imp.

Time between network parameters publication and gate closure time	19	82.6%	3.14
Time between market results and hub nominations	19	82.6%	3.09
Time between market results publication and nomination of the production to TSO	20	87.0%	3.09
Time between market results publication and cross-border nominations gate closure time on borders outside CWE	20	87.0%	3.23
Other	5	21.7%	0.59
Total	23		



3-What is your needed time between network parameters publication and gate closure time (in minutes)?

	Nb	% cit.
45	1	4.3%
60	3	13.0%
75	3	13.0%
90	16	69.6%
Total	23	100.0%



4- What is your needed time between market results publication and hub nominations in Belgium (in minutes)?

	Nb	% cit.
30	0	0.0%
45	4	19.0%
60	17	81.0%
Total	21	100.0%



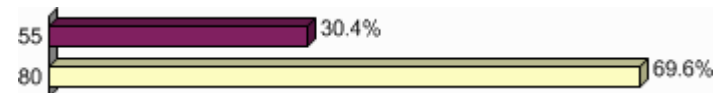
5- What is your needed time between market results publication and hub nominations in Germany (in minutes)?

	Nb	% cit.
85	10	43.5%
110	13	56.5%
Total	23	100.0%



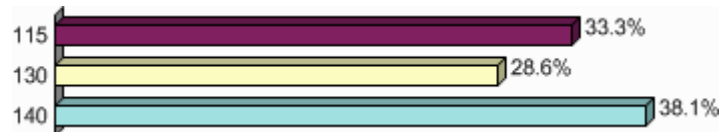
6- What is your needed time between market results publication and hub nominations in The Netherlands (in minutes)?

	Nb	% cit.
55	7	30.4%
80	16	69.6%
Total	23	100.0%



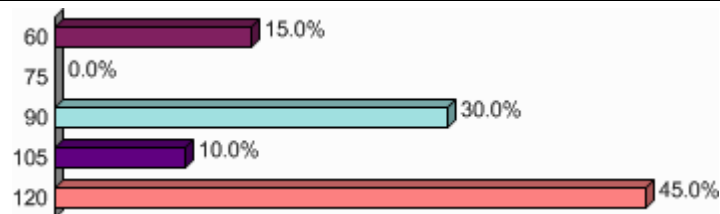
7- What is your needed time between market results publication and nomination of production to TSO given the new generation schedules deadlines in France (in minutes)?

	Nb	% cit.
115	7	33.3%
130	6	28.6%
140	8	38.1%
Total	21	100.0%



8- What is your needed time between market results publication and nomination of production to TSO given the new generation schedules deadlines in Belgium (in minutes)?

	Nb	% cit.
60	3	15.0%
75	0	0.0%
90	6	30.0%
105	2	10.0%
120	9	45.0%
Total	20	100.0%



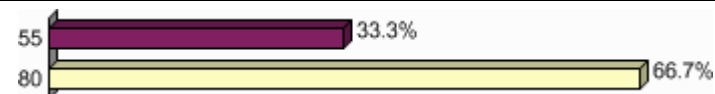
9- What is your needed time between market results publication and nomination of production to TSO given the new generation schedules deadlines Germany (in minutes)?

	Nb	% cit.
85	10	47.6%
110	11	52.4%
Total	21	100.0%



10- What is your needed time between market results publication and nomination of production to TSO given the new generation schedules deadlines The Netherlands (in minutes)?

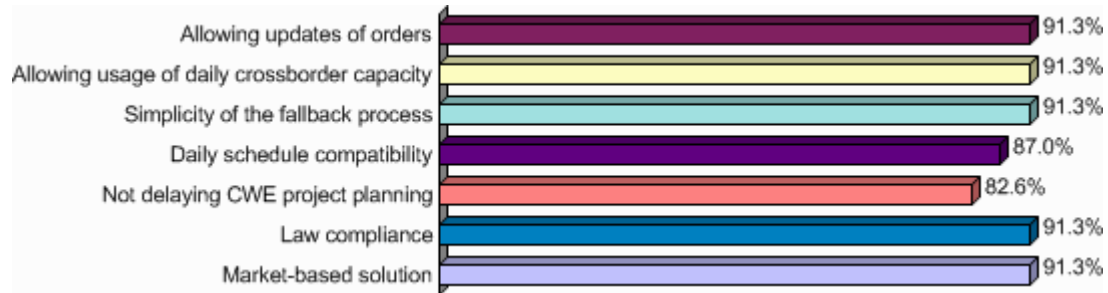
	Nb	% cit.
55	7	33.3%
80	14	66.7%
Total	21	100.0%



Fall Back Solutions

1- In case of fallback situation, how would you rank the following requirements (1 being the most important)?

	Nb	% obs.	Imp.
Allowing updates of orders	21	91.3%	4.55
Allowing usage of daily crossborder capacity	21	91.3%	4.64
Simplicity of the fallback process	21	91.3%	4.73
Daily schedule compatibility	20	87.0%	3.59
Not delaying CWE project planning	19	82.6%	2.09
Law compliance	21	91.3%	2.41
Market-based solution	21	91.3%	4.82
Total	23		



2- Is option 1 acceptable regarding the risk of being unbalanced in day-ahead?

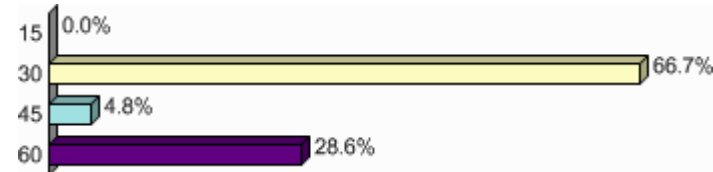
	Nb	% cit.
Yes	4	17.4%
No	19	82.6%
Total	23	100.0%



3- As far as option 1 is concerned, what time do you need to update your orders in the order books (in minutes)?

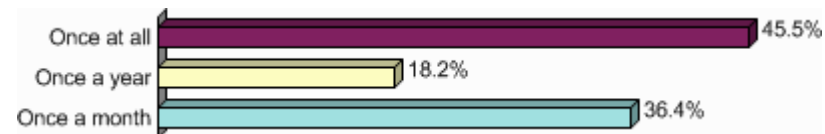
	Nb	% cit.
15	0	0.0%

30	14	66.7%
45	1	4.8%
60	6	28.6%
Total	21	100.0%



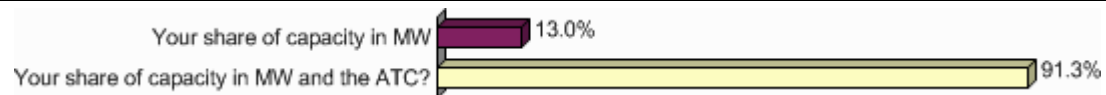
4-As far as option 2 is concerned, how often should the participants of the fallback mechanism have the possibility to register?

	Nb	% cit.
Once at all	10	45.5%
Once a year	4	18.2%
Once a month	8	36.4%
Total	22	100.0%



5- In case of option 2, do you need to know :

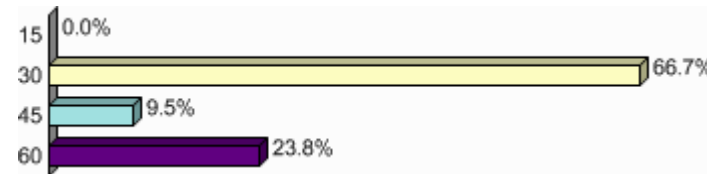
	Nb	% obs.
Your share of capacity in MW	3	13.0%
Your share of capacity in MW and the ATC?	21	91.3%
Total	23	



6- In case of option 2, what time do you need to update your orders in the order book once you know the capacity you have (in minutes)?

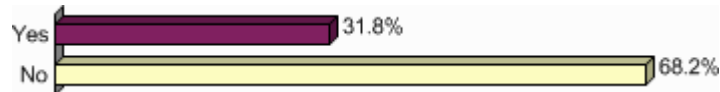
	Nb	% cit.
15	0	0.0%
30	14	66.7%

45	2	9.5%
60	5	23.8%
Total	21	100.0%



7- Knowing that fallbacks are very rare, would option 2 be acceptable even if it is not market-based?

	Nb	% cit.
Yes	7	31.8%
No	15	68.2%
Total	22	100.0%



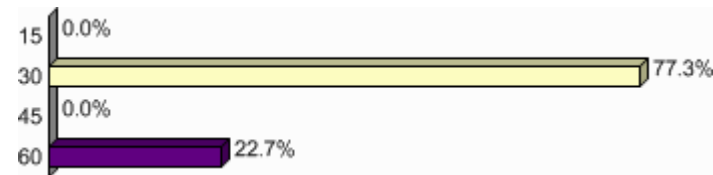
8-As far as option 3 is concerned, what is your minimum needed time between the publication of ATC auction specification and auction start (in minutes)?

	Nb	% cit.
15	0	0.0%
30	22	100.0%
Total	22	100.0%



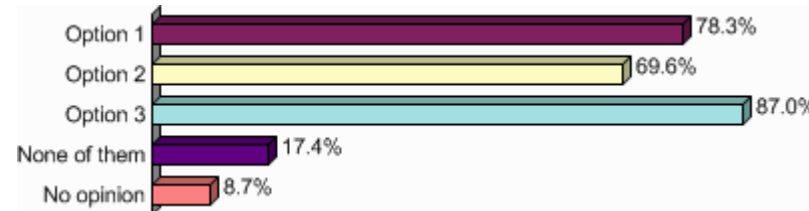
9- In case of option 3, what time do you need to update your orders in the order book once you know the capacity you have (in minutes)?

	Nb	% cit.
15	0	0.0%
30	17	77.3%
45	0	0.0%
60	5	22.7%
Total	22	100.0%



10-How would you rank those three options (1 being the most acceptable for you)?

	Nb	% obs.	Imp.
Option 1	18	78.3%	2.91
Option 2	16	69.6%	2.91
Option 3	20	87.0%	4.09
None of them	4	17.4%	0.59
No opinion	2	8.7%	0.14
Total	23		



12- In case of fallback, what is your needed time between market results publication and nomination of production to the TSO in France (in minutes)?

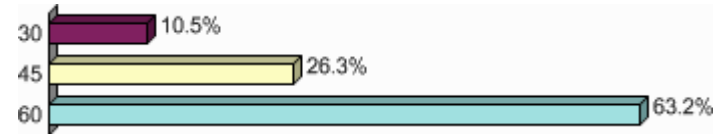
	Nb	% cit.
60	11	52.4%
75	3	14.3%
90	7	33.3%
Total	21	100.0%



13- In case of fallback, what is your needed time between market results publications and nomination of production to the TSO in Belgium (in minutes)?

	Nb	% cit.
--	----	--------

30	2	10.5%
45	5	26.3%
60	12	63.2%
Total	19	100.0%

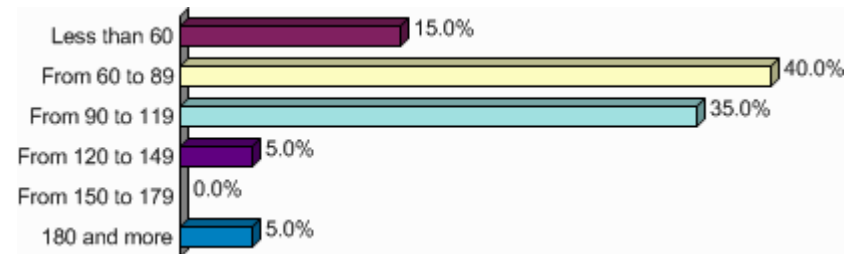


14-In case of fallback, what is your needed time between market results publication and nomination of production to the TSO in Germany (in minutes)?

Mean = **78.50**

Min = **30** Max = **180**

	Nb	% cit.
Less than 60	3	15.0%
From 60 to 89	8	40.0%
From 90 to 119	7	35.0%
From 120 to 149	1	5.0%
From 150 to 179	0	0.0%
180 and more	1	5.0%
Total	20	100.0%



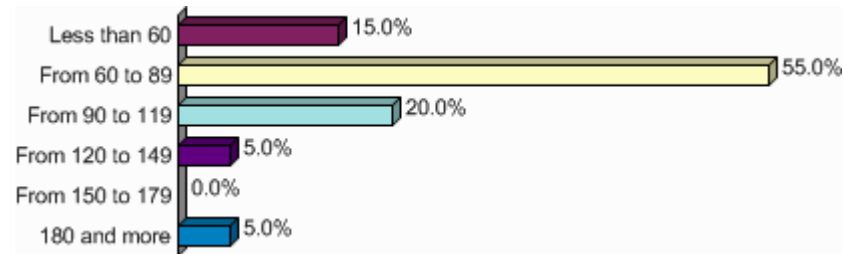
15- In case of fallback, what is your needed time between market results publication and nomination of production to the TSO in The Netherlands (in minutes)?

Mean = **73.25**

Min = **30** Max = **180**

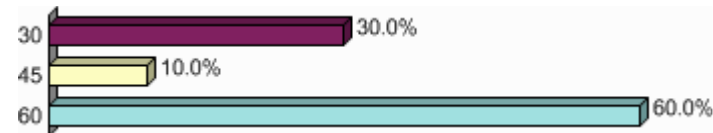
	Nb	% cit.
Less than 60	3	15.0%
From 60 to 89	11	55.0%

From 90 to 119	4	20.0%
From 120 to 149	1	5.0%
From 150 to 179	0	0.0%
180 and more	1	5.0%
Total	20	100.0%



16- In case of option 2 and 3, what is your needed time in France between crossborder nominations and nomination of production to the TSO (in minutes)?

	Nb	% cit.
30	6	30.0%
45	2	10.0%
60	12	60.0%
Total	20	100.0%



17- In case of option 2 and 3, what is your needed time in France between power exchange results publication and crossborder nominations (in minutes)?

	Nb	% cit.
15	1	4.5%
30	21	95.5%
Total	22	100.0%



18- In case of option 2 and 3, what is your needed time in Belgium between power exchange results publication and crossborder nominations (in minutes)?

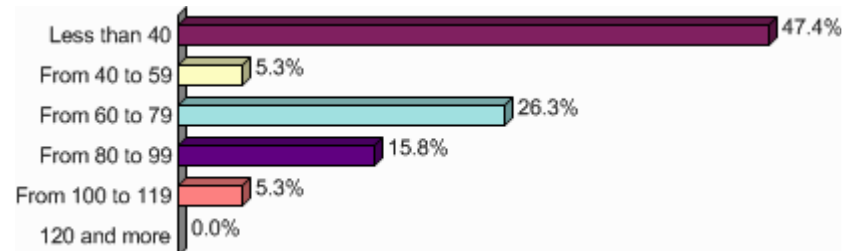
	Nb	% cit.
15	2	11.1%
30	16	88.9%
Total	18	100.0%



19- In case of option 2 and 3, what is your needed time in Germany between power exchange results publication and crossborder nominations (in minutes)?

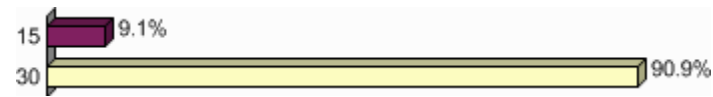
Mean = 51.32
Min = 20 Max = 110

	Nb	% cit.
Less than 40	9	47.4%
From 40 to 59	1	5.3%
From 60 to 79	5	26.3%
From 80 to 99	3	15.8%
From 100 to 119	1	5.3%
120 and more	0	0.0%
Total	19	100.0%



20- In case of option 2 and 3, what is your needed time in The Netherlands between power exchange results publication and crossborder nominations (in minutes)?

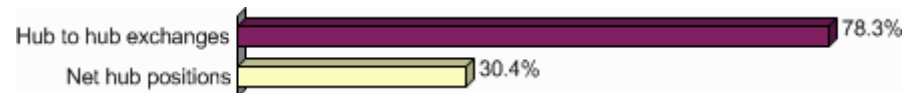
	Nb	% cit.
15	2	9.1%
30	20	90.9%
Total	22	100.0%



Flow-Based Model and Data publication

1- In the simulation worksheet, what would you prefer to enter?

	Nb	% obs.
Hub to hub exchanges	18	78.3%
Net hub positions	7	30.4%
Total	23	



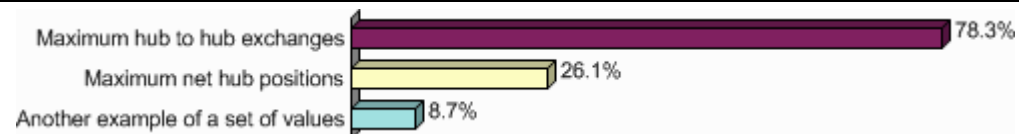
2-Do you need other data than the ones presented?

	Nb	% cit.
Yes	10	45.5%
No	12	54.5%
Total	22	100.0%



3-What would be your preferred indicator to visualize network limitations?

	Nb	% obs.
Maximum hub to hub exchanges	18	78.3%
Maximum net hub positions	6	26.1%
Another example of a set of values	2	8.7%
Total	23	



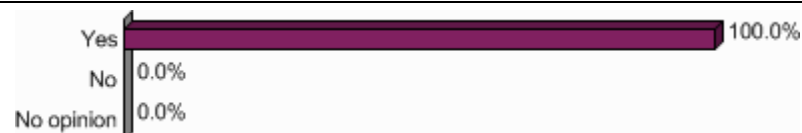
4-Do you need other network data than the ones presented?

	Nb	% cit.
Yes	13	61.9%
No	8	38.1%
Total	21	100.0%



5-Would you prefer to have network information published on a common website managed by the TSOs?

	Nb	% cit.
Yes	23	100.0%
No	0	0.0%
No opinion	0	0.0%
Total	23	100.0%



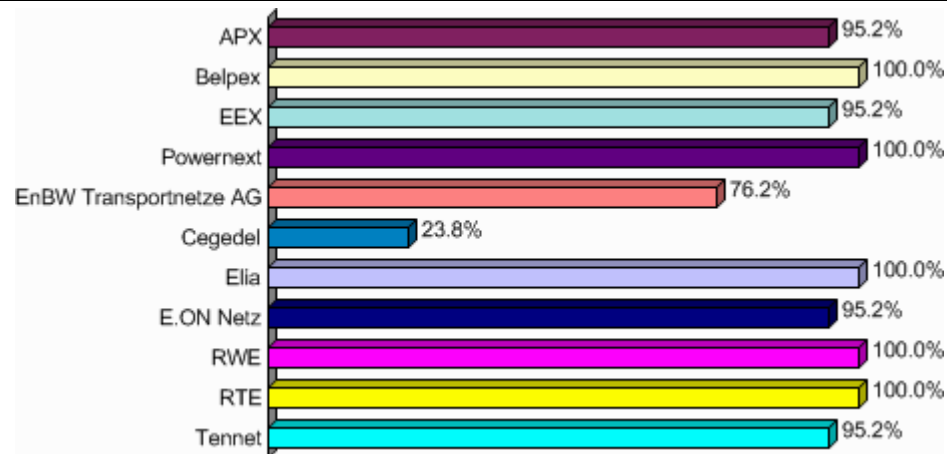
4-Respondents that are either Elia customer or Belpex member

General

3-You are a customer of...

	Nb	% obs.
APX	20	95.2%
Belpex	21	100.0%
EEX	20	95.2%
Powernext	21	100.0%
EnBW Transportnetze AG	16	76.2%
Cegedel	5	23.8%
Elia	21	100.0%

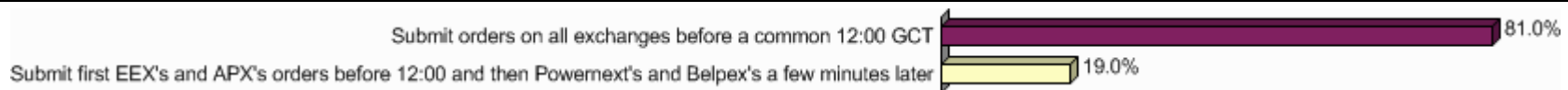
E.ON Netz	20	95.2%
RWE	21	100.0%
RTE	21	100.0%
Tennet	20	95.2%
Total	21	



Daily Schedule and Market Timings

1-Since currently, Powernext and Belpex do not have interregional coupling (NordNed, EMCC), which option is preferable?

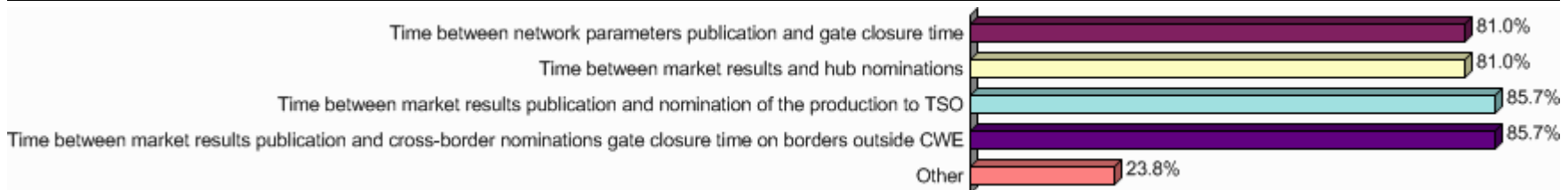
	Nb	% cit.
Submit orders on all exchanges before a common 12:00 GCT	17	81.0%
Submit first EEX's and APX's orders before 12:00 and then Powernext's and Belpex's a few minutes later	4	19.0%
Total	21	100.0%



2-What time interval is the most constraining for you (1 being the most constraining)?

	Nb	% obs.	Imp.

Time between market results and hub nominations	17	81.0%	3.21
Time between market results publication and nomination of the production to TSO	18	85.7%	3.21
Time between market results publication and cross-border nominations gate closure time on borders outside CWE	18	85.7%	3.37
Other	5	23.8%	0.68
Total	21		



3-What is your needed time between network parameters publication and gate closure time (in minutes)?

	Nb	% cit.
45	1	4.8%
60	2	9.5%
75	3	14.3%
90	15	71.4%
Total	21	100.0%



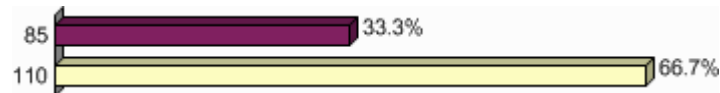
4- What is your needed time between market results publication and hub nominations in Belgium (in minutes)?

	Nb	% cit.
30	1	4.8%
45	3	14.3%
60	17	81.0%
Total	21	100.0%



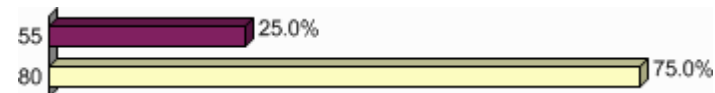
5- What is your needed time between market results publication and hub nominations in Germany (in minutes)?

	Nb	% cit.
85	7	33.3%
110	14	66.7%
Total	21	100.0%



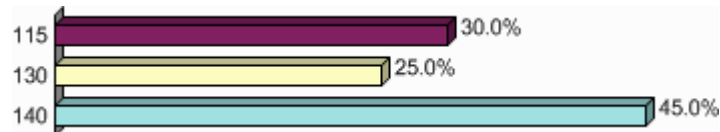
6- What is your needed time between market results publication and hub nominations in The Netherlands (in minutes)?

	Nb	% cit.
55	5	25.0%
80	15	75.0%
Total	20	100.0%



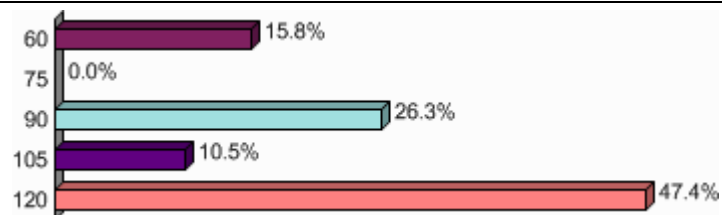
7- What is your needed time between market results publication and nomination of production to TSO given the new generation schedules deadlines in France (in minutes)?

	Nb	% cit.
115	6	30.0%
130	5	25.0%
140	9	45.0%
Total	20	100.0%



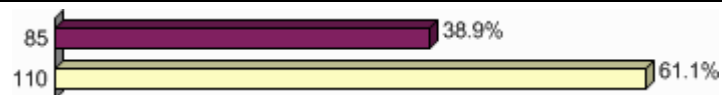
8- What is your needed time between market results publication and nomination of production to TSO given the new generation schedules deadlines in Belgium (in minutes)?

	Nb	% cit.
60	3	15.8%
75	0	0.0%
90	5	26.3%
105	2	10.5%
120	9	47.4%
Total	19	100.0%



9- What is your needed time between market results publication and nomination of production to TSO given the new generation schedules deadlines Germany (in minutes)?

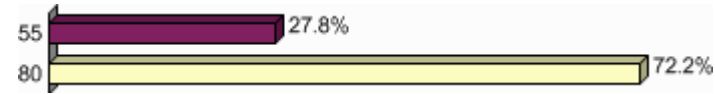
	Nb	% cit.
85	7	38.9%
110	11	61.1%
Total	18	100.0%



10- What is your needed time between market results publication and nomination of production to TSO given the new generation schedules deadlines The Netherlands (in minutes)?

	Nb	% cit.
--	----	--------

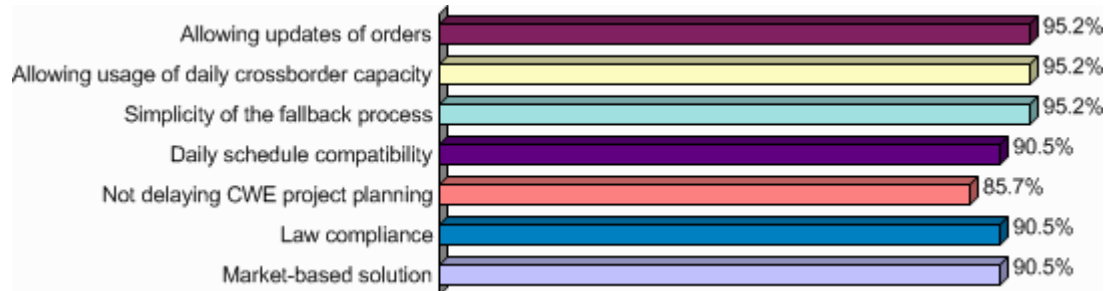
55	5	27.8%
80	13	72.2%
Total	18	100.0%



Fall Back Solutions

1- In case of fallback situation, how would you rank the following requirements (1 being the most important)?			
	Nb	% obs.	Imp.
Allowing updates of orders	20	95.2%	5.00
Allowing usage of daily crossborder capacity	20	95.2%	4.95
Simplicity of the fallback process	20	95.2%	4.95
Daily schedule compatibility	19	90.5%	3.70
Not delaying CWE project planning	18	85.7%	2.25

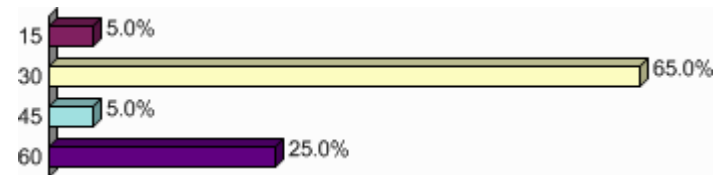
Market-based solution	19	90.5%	4.65
Total	21		



2- Is option 1 acceptable regarding the risk of being unbalanced in day-ahead?		
	Nb	% cit.
Yes	5	23.8%
No	16	76.2%
Total	21	100.0%

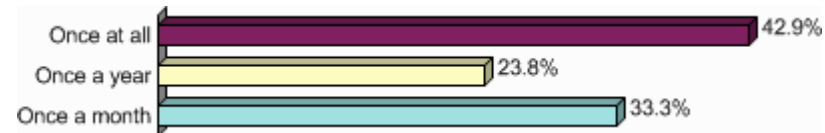


3- As far as option 1 is concerned, what time do you need to update your orders in the order books (in minutes)?		
	Nb	% cit.
15	1	5.0%
30	13	65.0%
45	1	5.0%
60	5	25.0%
Total	20	100.0%



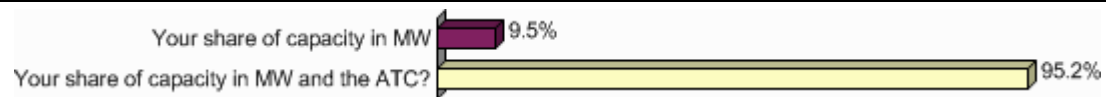
4-As far as option 2 is concerned, how often should the participants of the fallback mechanism have the possibility to register?

	Nb	% cit.
Once at all	9	42.9%
Once a year	5	23.8%
Once a month	7	33.3%
Total	21	100.0%



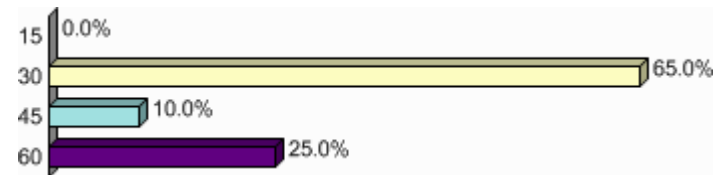
5- In case of option 2, do you need to know :

	Nb	% obs.
Your share of capacity in MW	2	9.5%
Your share of capacity in MW and the ATC?	20	95.2%
Total	21	



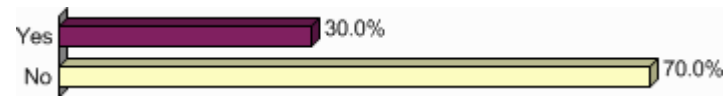
6- In case of option 2, what time do you need to update your orders in the order book once you know the capacity you have (in minutes)?

	Nb	% cit.
15	0	0.0%
30	13	65.0%
45	2	10.0%
60	5	25.0%
Total	20	100.0%



7- Knowing that fallbacks are very rare, would option 2 be acceptable even if it is not market-based?

	Nb	% cit.
Yes	6	30.0%
No	14	70.0%
Total	20	100.0%



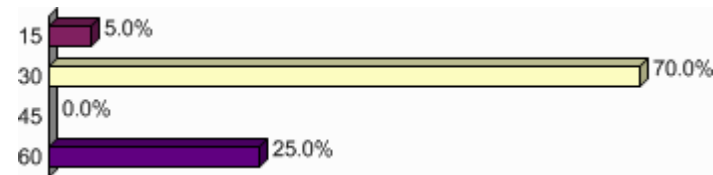
8-As far as option 3 is concerned, what is your minimum needed time between the publication of ATC auction specification and auction start (in minutes)?

	Nb	% cit.
15	1	5.0%
30	19	95.0%
Total	20	100.0%



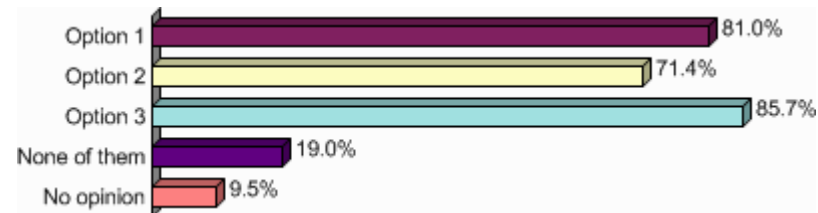
9- In case of option 3, what time do you need to update your orders in the order book once you know the capacity you have (in minutes)?

	Nb	% cit.
15	1	5.0%
30	14	70.0%
45	0	0.0%
60	5	25.0%
Total	20	100.0%



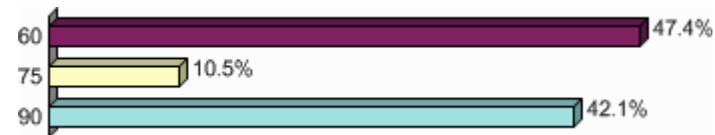
10-How would you rank those three options (1 being the most acceptable for you)?

	Nb	% obs.	Imp.
Option 1	17	81.0%	3.10
Option 2	15	71.4%	2.90
Option 3	18	85.7%	4.05
None of them	4	19.0%	0.65
No opinion	2	9.5%	0.15
Total	21		



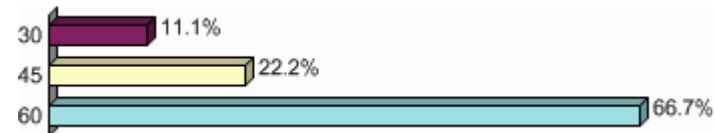
12- In case of fallback, what is your needed time between market results publication and nomination of production to the TSO in France (in minutes)?

	Nb	% cit.
60	9	47.4%
75	2	10.5%
90	8	42.1%
Total	19	100.0%



13- In case of fallback, what is your needed time between market results publications and nomination of production to the TSO in Belgium (in minutes)?

	Nb	% cit.
30	2	11.1%
45	4	22.2%
60	12	66.7%
Total	18	100.0%

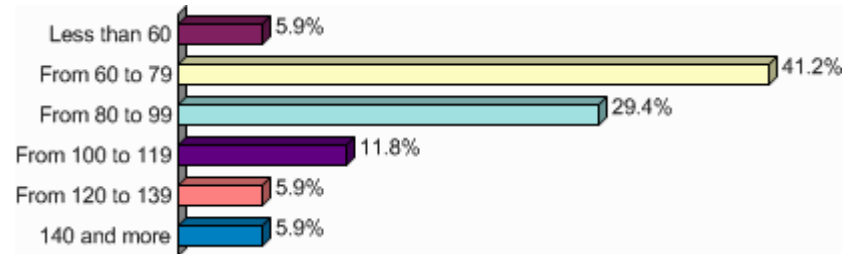


14- In case of fallback, what is your needed time between market results publication and nomination of production to the TSO in Germany (in minutes)?

Mean = 85.29
 Min = 45 Max = 180

	Nb	% cit.
Less than 60	1	5.9%
From 60 to 79	7	41.2%

From 80 to 99	5	29.4%
From 100 to 119	2	11.8%
From 120 to 139	1	5.9%
140 and more	1	5.9%
Total	17	100.0%



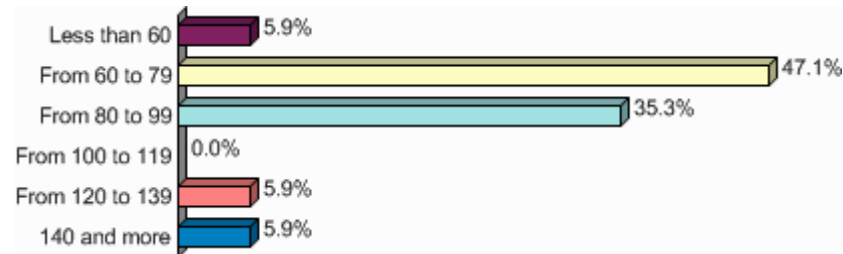
15- In case of fallback, what is your needed time between market results publication and nomination of production to the TSO in The Netherlands (in minutes)?

Mean = **79.12**

Min = **45** Max = **180**

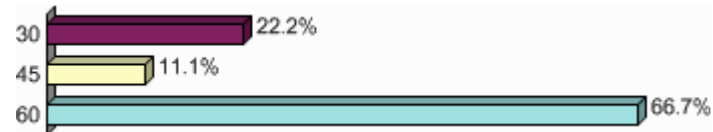
	Nb	% cit.
Less than 60	1	5.9%
From 60 to 79	8	47.1%

From 80 to 99	6	35.3%
From 100 to 119	0	0.0%
From 120 to 139	1	5.9%
140 and more	1	5.9%
Total	17	100.0%



16- In case of option 2 and 3, what is your needed time in France between crossborder nominations and nomination of production to the TSO (in minutes)?

	Nb	% cit.
30	4	22.2%
45	2	11.1%
60	12	66.7%
Total	18	100.0%



17- In case of option 2 and 3, what is your needed time in France between power exchange results publication and crossborder nominations (in minutes)?

	Nb	% cit.
15	0	0.0%
30	20	100.0%

Total	20	100.0%
--------------	-----------	---------------



18- In case of option 2 and 3, what is your needed time in Belgium between power exchange results publication and crossborder nominations (in minutes)?

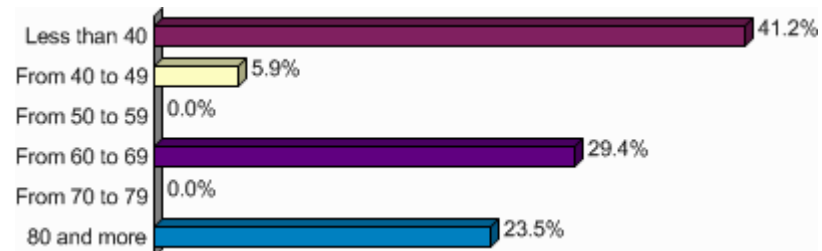
	Nb	% cit.
15	1	5.6%
30	17	94.4%
Total	18	100.0%



19- In case of option 2 and 3, what is your needed time in Germany between power exchange results publication and crossborder nominations (in minutes)?

Mean = 54.41
Min = 30 Max = 110

	Nb	% cit.
Less than 40	7	41.2%
From 40 to 49	1	5.9%
From 50 to 59	0	0.0%
From 60 to 69	5	29.4%
From 70 to 79	0	0.0%
80 and more	4	23.5%
Total	17	100.0%



20- In case of option 2 and 3, what is your needed time in The Netherlands between power exchange results publication and crossborder nominations (in minutes)?

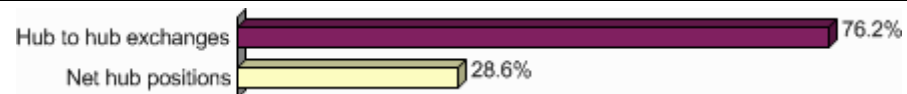
	Nb	% cit.
15	0	0.0%
30	19	100.0%
Total	19	100.0%



Flow-Based Model and Data publication

1- In the simulation worksheet, what would you prefer to enter?

	Nb	% obs.
Hub to hub exchanges	16	76.2%
Net hub positions	6	28.6%
Total	21	



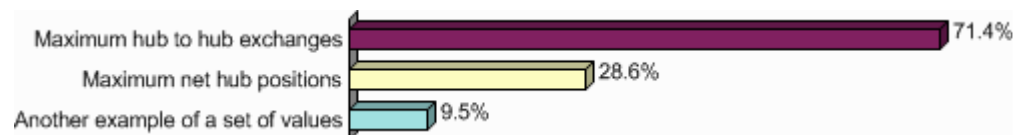
2-Do you need other data than the ones presented?

	Nb	% cit.
Yes	8	40.0%
No	12	60.0%
Total	20	100.0%



3-What would be your preferred indicator to visualize network limitations?

	Nb	% obs.
Maximum hub to hub exchanges	15	71.4%
Maximum net hub positions	6	28.6%
Another example of a set of values	2	9.5%
Total	21	



4-Do you need other network data than the ones presented?		
	Nb	% cit.
Yes	11	57.9%
No	8	42.1%
Total	19	100.0%



5-Would you prefer to have network information published on a common website managed by the TSOs?		
	Nb	% cit.
Yes	21	100.0%
No	0	0.0%
No opinion	0	0.0%
Total	21	100.0%

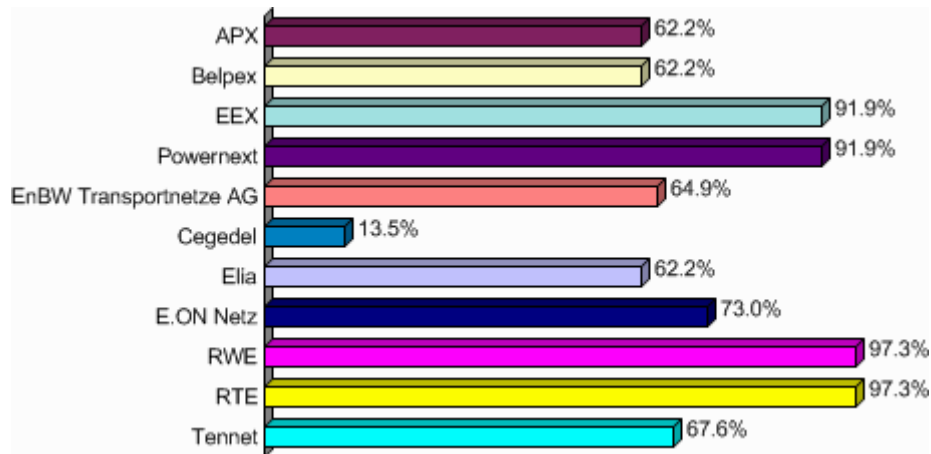


5-Respondents that are either EnBW Transportnetze, E.On Netz, RWE customer or EEX member

General

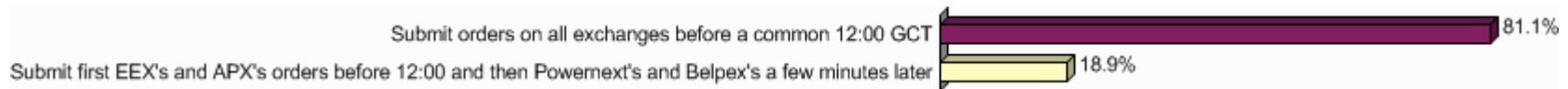
3-You are a customer of...		
	Nb	% obs.

APX	23	62.2%
Belpex	23	62.2%
EEX	34	91.9%
Powernext	34	91.9%
EnBW Transportnetze AG	24	64.9%
Cegedel	5	13.5%
Elia	23	62.2%
E.ON Netz	27	73.0%
RWE	36	97.3%
RTE	36	97.3%
Tennet	25	67.6%
Total	37	



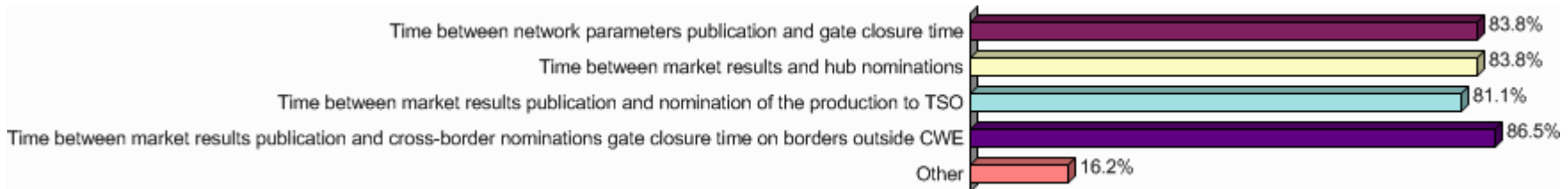
Daily Schedule and Market Timings

1-Since currently, Powernext and Belpex do not have interregional coupling (NordNed, EMCC), which option is preferable?		
	Nb	% cit.
Submit orders on all exchanges before a common 12:00 GCT	30	81.1%
Submit first EEX's and APX's orders before 12:00 and then Powernext's and Belpex's a few minutes later	7	18.9%
Total	37	100.0%



2-What time interval is the most constraining for you (1 being the most constraining)?

	Nb	% obs.	Imp.
Time between network parameters publication and gate closure time	31	83.8%	3.29
Time between market results and hub nominations	31	83.8%	3.20
Time between market results publication and nomination of the production to TSO	30	81.1%	2.74
Time between market results publication and cross-border nominations gate closure time on borders outside CWE	32	86.5%	3.40
Other	6	16.2%	0.40
Total	37		



3-What is your needed time between network parameters publication and gate closure time (in minutes)?

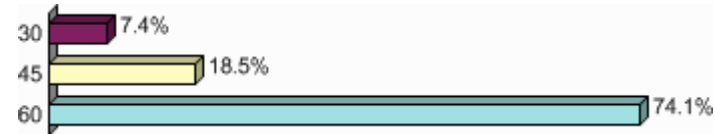
	Nb	% cit.
45	4	10.8%
60	8	21.6%
75	4	10.8%
90	21	56.8%
Total	37	100.0%



4- What is your needed time between market results publication and hub nominations in Belgium (in minutes)?

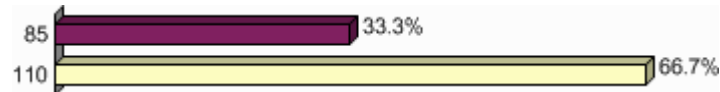
	Nb	% cit.
--	----	--------

30	2	7.4%
45	5	18.5%
60	20	74.1%
Total	27	100.0%



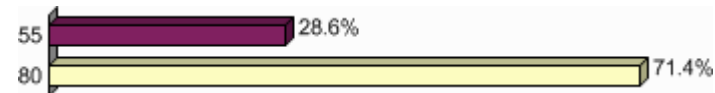
5- What is your needed time between market results publication and hub nominations in Germany (in minutes)?

	Nb	% cit.
85	12	33.3%
110	24	66.7%
Total	36	100.0%



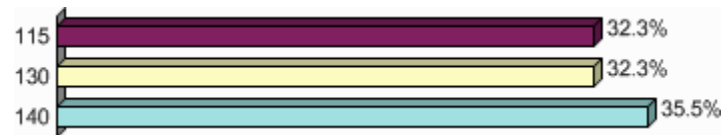
6- What is your needed time between market results publication and hub nominations in The Netherlands (in minutes)?

	Nb	% cit.
55	8	28.6%
80	20	71.4%
Total	28	100.0%



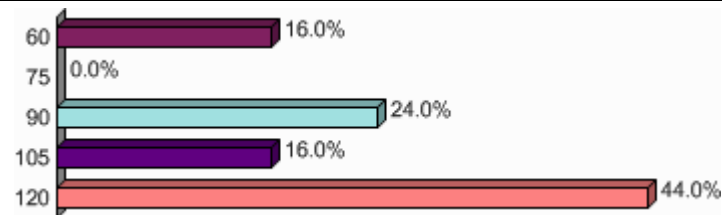
7- What is your needed time between market results publication and nomination of production to TSO given the new generation schedules deadlines in France (in minutes)?

	Nb	% cit.
115	10	32.3%
130	10	32.3%
140	11	35.5%
Total	31	100.0%



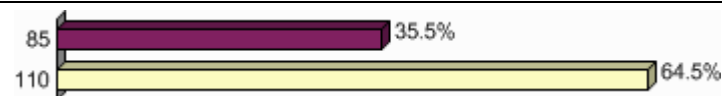
8- What is your needed time between market results publication and nomination of production to TSO given the new generation schedules deadlines in Belgium (in minutes)?

	Nb	% cit.
60	4	16.0%
75	0	0.0%
90	6	24.0%
105	4	16.0%
120	11	44.0%
Total	25	100.0%



9- What is your needed time between market results publication and nomination of production to TSO given the new generation schedules deadlines Germany (in minutes)?

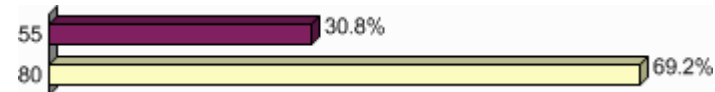
	Nb	% cit.
85	11	35.5%
110	20	64.5%
Total	31	100.0%



10- What is your needed time between market results publication and nomination of production to TSO given the new generation schedules deadlines The Netherlands (in minutes)?

	Nb	% cit.
55	8	30.8%

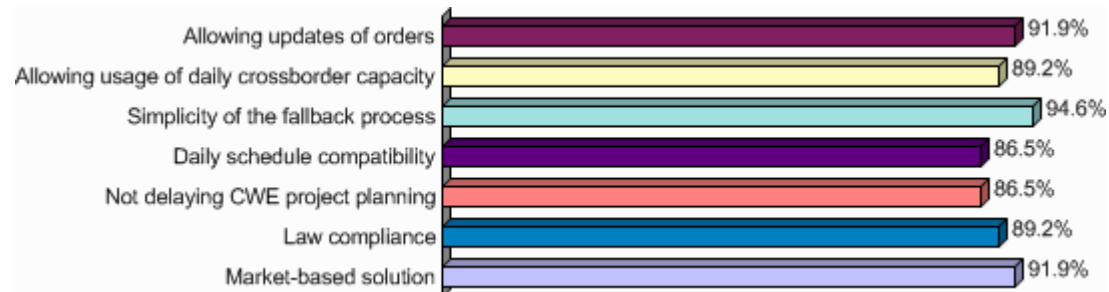
80	18	69.2%
Total	26	100.0%



Fall Back Solutions

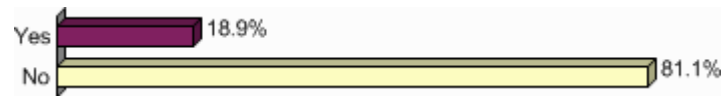
1- In case of fallback situation, how would you rank the following requirements (1 being the most important)?

	Nb	% obs.	Imp.
Allowing updates of orders	34	91.9%	4.72
Allowing usage of daily crossborder capacity	33	89.2%	4.50
Simplicity of the fallback process	35	94.6%	4.86
Daily schedule compatibility	32	86.5%	3.78
Not delaying CWE project planning	32	86.5%	1.97
Law compliance	33	89.2%	2.17
Market-based solution	34	91.9%	4.58
Total	37		



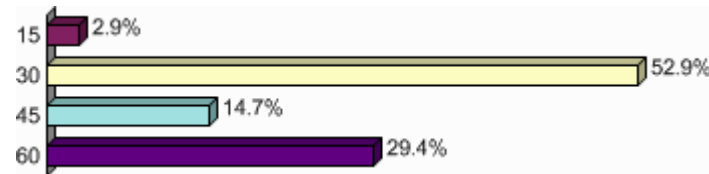
2- Is option 1 acceptable regarding the risk of being unbalanced in day-ahead?

	Nb	% cit.
Yes	7	18.9%
No	30	81.1%
Total	37	100.0%



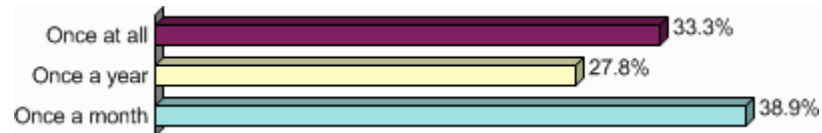
3- As far as option 1 is concerned, what time do you need to update your orders in the order books (in minutes)?

	Nb	% cit.
15	1	2.9%
30	18	52.9%
45	5	14.7%
60	10	29.4%
Total	34	100.0%



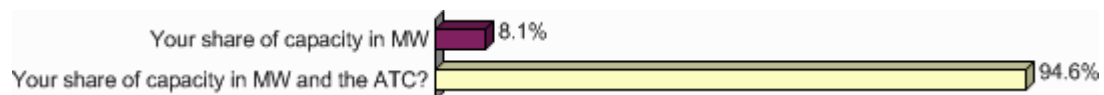
4-As far as option 2 is concerned, how often should the participants of the fallback mechanism have the possibility to register?

	Nb	% cit.
Once at all	12	33.3%
Once a year	10	27.8%
Once a month	14	38.9%
Total	36	100.0%



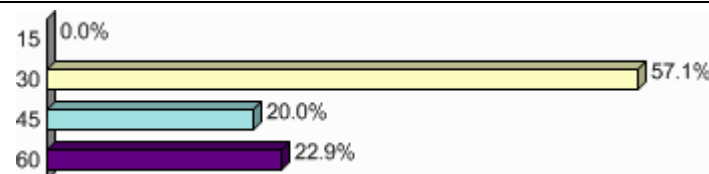
5- In case of option 2, do you need to know :

	Nb	% obs.
Your share of capacity in MW	3	8.1%
Your share of capacity in MW and the ATC?	35	94.6%
Total	37	



6- In case of option 2, what time do you need to update your orders in the order book once you know the capacity you have (in minutes)?

	Nb	% cit.
15	0	0.0%
30	20	57.1%
45	7	20.0%
60	8	22.9%
Total	35	100.0%



7- Knowing that fallbacks are very rare, would option 2 be acceptable even if it is not market-based?

	Nb	% cit.
Yes	13	36.1%
No	23	63.9%
Total	36	100.0%



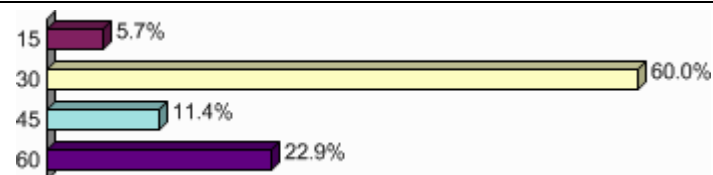
8-As far as option 3 is concerned, what is your minimum needed time between the publication of ATC auction specification and auction start (in minutes)?

	Nb	% cit.
15	2	5.6%
30	34	94.4%
Total	36	100.0%



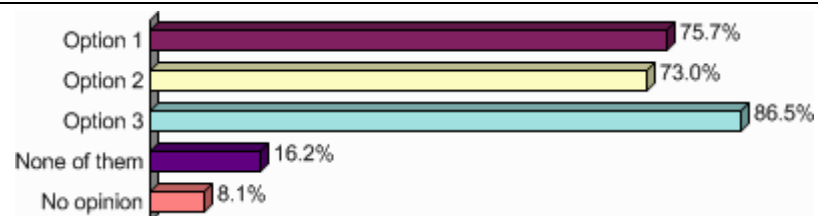
9- In case of option 3, what time do you need to update your orders in the order book once you know the capacity you have (in minutes)?

	Nb	% cit.
15	2	5.7%
30	21	60.0%
45	4	11.4%
60	8	22.9%
Total	35	100.0%



10-How would you rank those three options (1 being the most acceptable for you)?

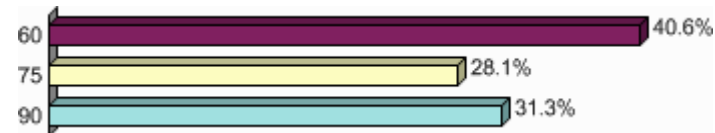
	Nb	% obs.	Imp.
Option 1	28	75.7%	2.75
Option 2	27	73.0%	2.97
Option 3	32	86.5%	4.03
None of them	6	16.2%	0.58
No opinion	3	8.1%	0.22
Total	37		



12- In case of fallback, what is your needed time between market results publication and nomination of production to the TSO in France (in minutes)?

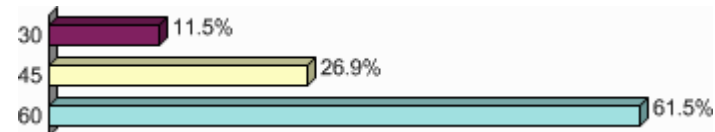
	Nb	% cit.
60	13	40.6%
75	9	28.1%
90	10	31.3%

Total	32	100.0%
--------------	-----------	---------------



13- In case of fallback, what is your needed time between market results publications and nomination of production to the TSO in Belgium (in minutes)?

	Nb	% cit.
30	3	11.5%
45	7	26.9%
60	16	61.5%
Total	26	100.0%

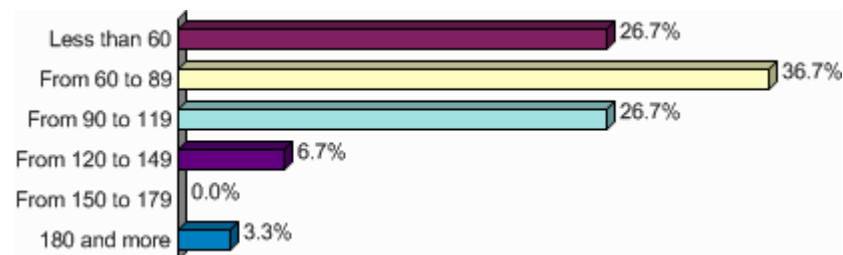


14-In case of fallback, what is your needed time between market results publication and nomination of production to the TSO in Germany (in minutes)?

Mean = **73.00**

Min = **30** Max = **180**

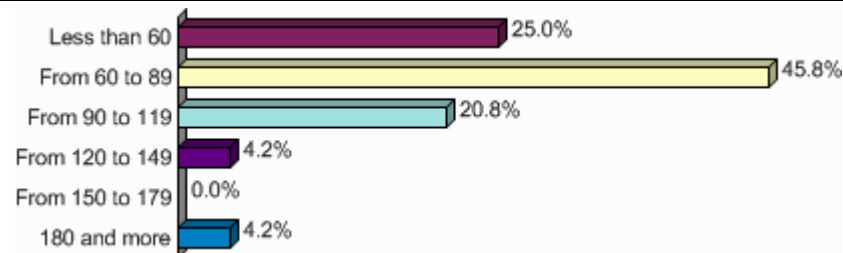
	Nb	% cit.
Less than 60	8	26.7%
From 60 to 89	11	36.7%
From 90 to 119	8	26.7%
From 120 to 149	2	6.7%
From 150 to 179	0	0.0%
180 and more	1	3.3%
Total	30	100.0%



15- In case of fallback, what is your needed time between market results publication and nomination of production to the TSO in The Netherlands (in minutes)?

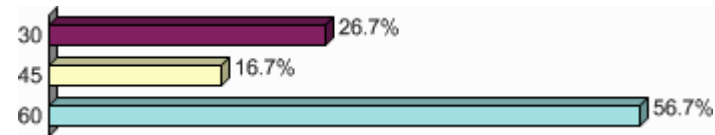
Mean = 69.17
Min = 30 Max = 180

	Nb	% cit.
Less than 60	6	25.0%
From 60 to 89	11	45.8%
From 90 to 119	5	20.8%
From 120 to 149	1	4.2%
From 150 to 179	0	0.0%
180 and more	1	4.2%
Total	24	100.0%



16- In case of option 2 and 3, what is your needed time in France between crossborder nominations and nomination of production to the TSO (in minutes)?

	Nb	% cit.
30	8	26.7%
45	5	16.7%
60	17	56.7%
Total	30	100.0%



17- In case of option 2 and 3, what is your needed time in France between power exchange results publication and crossborder nominations (in minutes)?

	Nb	% cit.
15	2	5.7%
30	33	94.3%
Total	35	100.0%



18- In case of option 2 and 3, what is your needed time in Belgium between power exchange results publication and crossborder nominations (in minutes)?

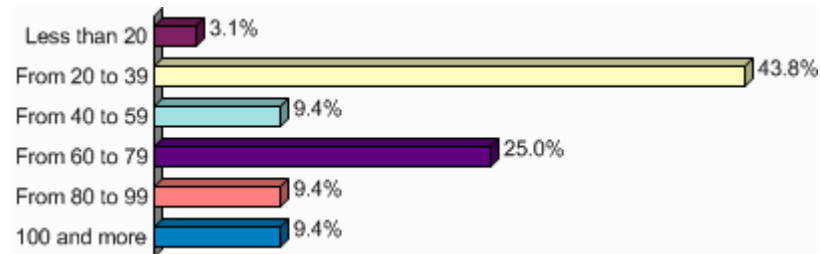
	Nb	% cit.
15	3	11.5%
30	23	88.5%
Total	26	100.0%



19- In case of option 2 and 3, what is your needed time in Germany between power exchange results publication and crossborder nominations (in minutes)?

Mean = 51.72
Min = 15 Max = 120

	Nb	% cit.
Less than 20	1	3.1%
From 20 to 39	14	43.8%
From 40 to 59	3	9.4%
From 60 to 79	8	25.0%
From 80 to 99	3	9.4%
100 and more	3	9.4%
Total	32	100.0%

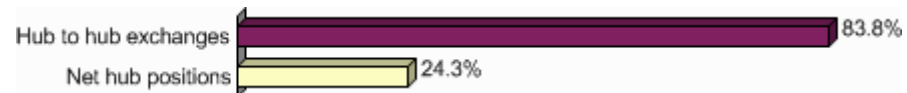


20- In case of option 2 and 3, what is your needed time in The Netherlands between power exchange results publication and crossborder nominations (in minutes)?		
	Nb	% cit.
15	3	10.3%
30	26	89.7%
Total	29	100.0%



Flow-Based Model and Data publication

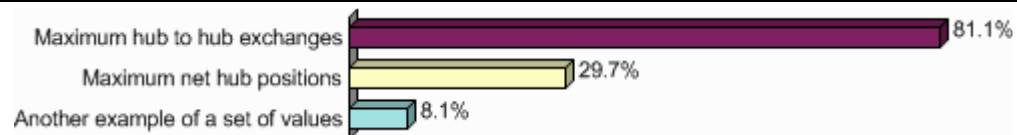
1- In the simulation worksheet, what would you prefer to enter?		
	Nb	% obs.
Hub to hub exchanges	31	83.8%
Net hub positions	9	24.3%
Total	37	



2-Do you need other data than the ones presented?		
	Nb	% cit.
Yes	14	38.9%
No	22	61.1%
Total	36	100.0%



3-What would be your preferred indicator to visualize network limitations?		
	Nb	% obs.
Maximum hub to hub exchanges	30	81.1%
Maximum net hub positions	11	29.7%
Another example of a set of values	3	8.1%
Total	37	



4-Do you need other network data than the ones presented?		
	Nb	% cit.
Yes	16	45.7%
No	19	54.3%
Total	35	100.0%



5-Would you prefer to have network information published on a common website managed by the TSOs?		
	Nb	% cit.
Yes	35	97.2%
No	1	2.8%
No opinion	0	0.0%
Total	36	100.0%



6 – List of respondents

Danske Commodities A/S
EDF Belgium s.a.
ENECO Energy Trade BV
Statkraft Markets GmbH
RWE Trading GmbH
Vattenfall Trading Services
Nordostschweizerische Kraftwerke AG (NOK)
EDP S.A.
e&t Energie Handelsgesellschaft mbH
J.P. Morgan
Centrica PLC
Morgan Stanley
Edison Trading S.p.A.
TIWAG-Tiroler Wasserkraft AG
ENI S.p.A.
ACCORD ENERGY LTD
Endesa Trading
Trafigura Electricity Italia S.p.A (TEI S.p.A)
RWE Supply & Trading GmbH
SPE S.A.
Compagnie Nationale du Rhone
GAZ DE FRANCE
UNION FENOSA GENERACION
Raetia Energie
EOS
Total Gas and Power Ltd
Saen Energy B.V.
SHELL ENERGY TRADING LTD
E.ON Energy Trading AG
POWEO SA
IBERDROLA GENERACION S.A.U
EnBW Trading GmbH, Karlsruhe, Germany
GASELYS
Nuon Energy Trade
Essent
ATEL AG
Lehman Brothers International (Europe)
European Federation of Energy Traders - EFET
ELECTRABEL SA
EDF Group

